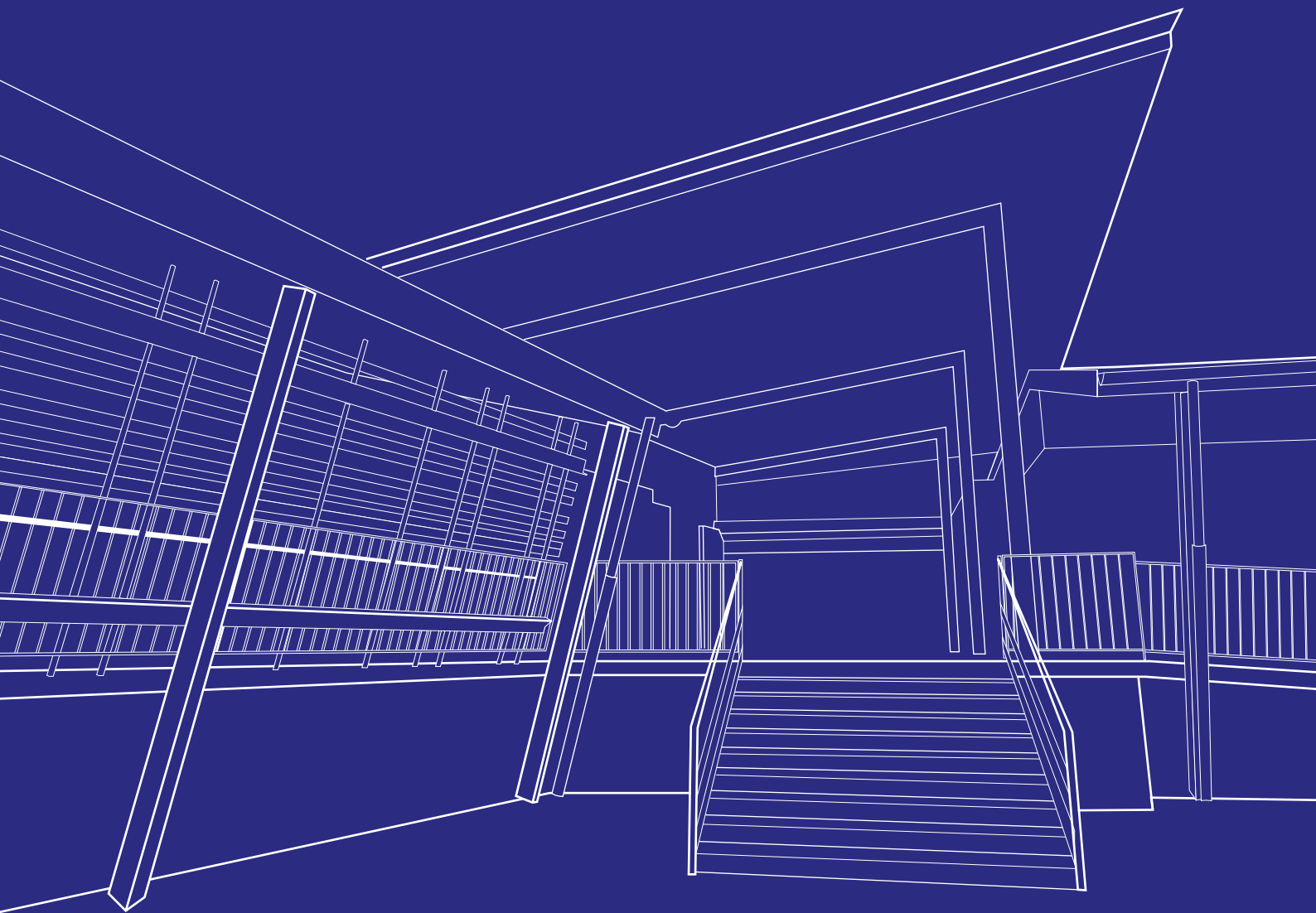




OUR CATHOLIC SCHOOLS

A DECADE OF GROWTH AND CHANGE



A SUMMARY OF CAPITAL WORKS PROJECTS UNDERTAKEN IN
CATHOLIC SCHOOLS IN THE DIOCESE OF MAITLAND-NEWCASTLE

Contents

Welcome from the Bishop	2	St Paul's Primary School, Gateshead	42	St Michael's Primary School, Nelson Bay	84
Welcome from the Director	3	Holy Cross Primary School, Glendale	44	St Therese's Primary School, New Lambton	86
Acknowledgement of Country	4	St Joseph's Primary School, Gloucester	46	St Brigid's Primary School, Raymond Terrace	88
Acknowledgement of Thanks	5	St Francis Xavier's College, Hamilton	48	St Paul's Primary School, Rutherford	90
Funding Definitions	5	St Joseph's Primary School, Kilaben Bay	50	St Mary's Primary School, Scone	92
St Joseph's High School, Aberdeen	6	St James' Primary School, Kotara South	52	Our Lady of Victories Primary School, Shortland	94
Holy Spirit Infants School, Abermain	8	Holy Spirit Primary School, Kurri Kurri	54	St Catherine's Catholic College, Singleton	96
St Columba's Primary School, Adamstown	10	St John's Primary School, Lambton	56	St Peter's Primary School, Stockton	98
St Pius X High School, Adamstown	12	All Saints College, St Joseph's Campus, Lochinvar	58	St Patrick's Primary School, Swansea	100
St Francis Xavier's Primary School, Belmont	14	St Patrick's Primary School, Lochinvar	60	St Clare's High School, Taree	102
St Paul's High School, Booragul	16	St John the Baptist Primary School, Maitland	62	St Joseph's Primary School, Taree	104
Rosary Park Catholic School, Branxton	18	All Saints College, St Peter's Campus, Maitland	64	Our Lady of Lourdes Primary School, Tarro	106
St Joseph's Primary School, Bulahdelah	20	All Saints College, St Mary's Campus, Maitland	66	St Patrick's Primary School, Wallsend	108
St Kevin's Primary School, Cardiff	22	San Clemente High School, Mayfield	68	Corpus Christi Primary School, Waratah	110
St Patrick's Primary School, Cessnock	24	St Dominic's Centre for Hearing Impaired Children, Mayfield	70	St Mary's Primary School, Warners Bay	112
St Joseph's Primary School, Charlestown	26	St Columban's Primary School, Mayfield	72	St Pius X Primary School, Windale	114
St Aloysius Catholic Primary School, Chisholm	28	St Joseph's Primary School, Merewether	74	St Joseph's Primary School, Wingham	116
St Joseph's Primary School, Denman	30	Holy Family Primary School, Merewether Beach	76	Summary of Capital Works	118
St Joseph's Primary School, Dungog	32	St Joseph's Primary School, Merriwa	78		
St Joseph's Primary School, East Maitland	34	St John Vianney Primary School, Morisset	80		
St Benedict's Primary School, Edgeworth	36	St James' Primary School, Muswellbrook	82		
Holy Name Primary School, Forster	38				
St Mary's High School, Gateshead	40				

A message from Bishop Bill Wright



One of the aspects of the Diocese of Maitland-Newcastle that has impressed me since arriving in 2011 is the integrated and co-operative nature of the system of schools here.

In historic terms, this owes much to the vision of religious sisters and brothers of various congregations, committed parishioners and parish priests who placed Catholic education high on their list of priorities. Those men and women would perhaps be surprised that these days Catholic schools appeal to a wider demographic than the one that established, funded and supported them.

Finances have always been an issue, and the infamous "Goulburn strike" of July 1962 perhaps best captures the depth of feeling within those directly affected by funding policies that discriminated against Catholic schools. However, clearly there is far more openness to Catholic education today, and openness too, to the richness and depth that a diversity of school systems brings to the community.

In 2003 the Catholic Schools Office introduced the Diocesan Family and School Building Levy (DF&SBL). This provided funding additional to government grants for capital works, and allowed the CSO to implement a staged program of development. One of the 'planks' of the DF&SBL was that not all schools could gain enhanced facilities at the same time, so grace and patience were required on the part of school staff and parents – and of course students!

In 2009 (then) Prime Minister Kevin Rudd announced a stimulus package which would inject billions of dollars into Australian schools – all schools. Almost overnight, the Building the Education Revolution altered the education landscape dramatically.

I have lost count of the number of schools I have visited to bless and open new facilities – typically state of the art halls available to both school and wider community – since mid 2011. The BER funding has not only boosted significantly the capacity of individual schools and parishes, but also fostered a climate of encouragement and optimism.

Ultimately, what we do in Catholic schools is not dependent on buildings, technology or equipment, but on the God-given gifts evident in our students, families and staff and on, dare I say it, the Holy Spirit! We preach a gospel that names Jesus Christ as "the cornerstone" and everything else sits under that overarching principle. However, there is no doubt that 'bricks and mortar' can enhance teaching and learning, provide a welcome boost, an occasion to gather and celebrate and a point of connection with the wider parish and local community.

I am proud to say that some schools whose grant had been enhanced by DF&SBL funds donated their share of BER funding to other diocesan schools whose needs remained unmet, and this demonstrates the integration and co-operation I mentioned earlier.

I am grateful, personally and as a voice for the diocese, for the largesse of the federal government led by former Prime Minister Kevin Rudd. BER was a bold move, which did attract criticism, and there are always competing demands and priorities for governments to address.

I like to think that the substantial improvements to our schools made possible under the BER program are something of a salve for all those in our parishes who made sacrifices to send their children to Catholic schools, and who bought the raffle tickets, baked the cakes, participated in the working bees and put their money on the plate!

The 2007 Pastoral Letter of the Bishops of NSW and the ACT, Catholic Schools at a Crossroads, refers to "the adventure of Catholic schooling in the 21st century". The fruits of the DF&SBL and BER have added a significant dimension to that adventure in the Diocese of Maitland-Newcastle.





Rosary Park Catholic School at Branxton in 2011 with children from the school.

Welcome from the Director, Ray Collins



The story of the construction of school facilities in the various parishes of the Diocese of Maitland-Newcastle is one built on the generosity of parishioners, the selfless support of the religious congregations, the commitment of parents and the vision of parish priests.

This booklet records the co-operative undertaking by the Catholic Schools Office, schools, parishes and diocese, particularly over the last ten years, highlighting construction and maintenance work funded through Building the Education Revolution, Australian and NSW Government grants and

the Diocesan Family and School Building Levy (DF&SBL).

The DF&SBL as it is now known was introduced in 2003 to stimulate capital development of schools. The DF&SBL provided a diocesan-wide approach to the funding of schools, so schools in smaller and less affluent parishes would receive funds that they may not have been able to generate at the local level. The Levy will continue to be an important source of funds to service loans through the Catholic Development Fund as the school system meets increasing demands for Catholic Education.

We acknowledge the construction and refurbishment of facilities outlined in this booklet have been achieved by the large funding contribution of the Australian Government and various NSW Government funded programs that have provided capital grant funding to non-government schools.

The most significant impact on funding came in February 2009 when then Prime Minister, Kevin Rudd, implemented a \$42 billion economic stimulus package to counter the effects of the Global Financial Crisis of 2008.

As a result the Diocese of Maitland-Newcastle has been able to complete building programs to benefit all schools in the diocese including the following target programs. The Building the Education Revolution program was the

single largest element of the stimulus plan comprising three main elements: National School Pride, Primary Schools for the 21st Century and Science and Language Centres. Over \$80 million has been spent on improving our schools under this funding, the majority on primary schools. The Trade Training Centres in Schools Program enabled major capital works to be built, existing facilities to be upgraded and industry standard infrastructure to be implemented. This funding has allowed over \$15 million to be spent improving our secondary schools.

In addition to this, more than \$116 million has been spent on improving schools from funding sources such as the DF&SBL, State and other Federal grants, Parents & Friends, schools, parishes and the Maitland-Newcastle Catholic Schools Office.

We gratefully acknowledge the support of politicians of all persuasions over the years who have ensured, in justice, that Government funding has been available to Catholic schools and acknowledge the support and contribution of parents, schools and parish communities as well as the diocese.



Acknowledgement of Country

We acknowledge the Traditional Owners of the land on which our schools are built.

We pay our respects to their Elders, past and present, and the Elders from other communities including the:

- Awabakal (Awabagal) people
- Biripi people
- Darkinjung (Darkinjung) people
- Gamilaroi people
- Winadjuri people
- Worimi people
- Wonnarua (Wonnaruah) people



Acknowledgement of thanks

The Catholic Diocese of Maitland-Newcastle and its schools acknowledge the Commonwealth and State Governments for the funding contributions they have made towards Catholic education and building projects in our diocese.

We also acknowledge the parents, carers, students, priests, principals, teaching staff, P & F Associations, architects, site workers and each school and parish community for their contribution towards making our goal for these facilities a reality and for their patience as each project took place.

Funding Definitions

BER	Building Education Revolution	IOSP	Investing in Our Schools Program – Community Grant
BER-NSP	National School Pride	BGAS	NSW Building Grants Assistance Scheme (previously known as the State Interest Subsidy Scheme) – State funded
BER-P21	Primary Schools for the 21st Century	CBGA	NSW Catholic Block Grant Authority
BER-SLC	Science and Language Centres	P&F	Parents & Friends
CGP	Capital Grants Program – Commonwealth funded	Special	Local contribution including funds from CSO, Parish, School, P&F or DF&SBL (but does not include any Commonwealth or State funding)
CSO	Catholic Schools Office	TTC	Trade Training Centres in Schools Program
DF&SBL	Diocesan Family and School Building Levy		
GCG	General Capital Grants – Previously known as IOSP		
GNE	General Element - Capital works		
GCGP	Government Capital Grants Program		

Other Definitions:

COLA Covered Outdoor Learning Area

TAS Technical Applied Studies



St Joseph's High School, Aberdeen

A: Segenhoe Street ABERDEEN 2336
PO Box 12 ABERDEEN 2336

P: 6543 7444

F: 6543 7924

E: admin@aberdeen.catholic.edu.au

W: <http://aberdeen.catholic.edu.au>

Enrolment: 620

Year 7 to Year 12

Region: Upper Hunter

Parish: Muswellbrook





HISTORY

The school was originally established at the request of Bishop James Murray by the Sisters of St Joseph based in Lochinvar in 1886. It was a primary school serving Aberdeen and a primary boys boarding school serving the northern half of New South Wales. In 1972 St Joseph's Aberdeen was established as a regional Catholic secondary school serving the five parishes of the Upper Hunter: Denman, Merriwa, Murrurundi, Muswellbrook and Scone.

This new coeducational school was originally housed in the buildings of the former boarding school. To cater for the needs of secondary education extensive building programs were conducted in the 1970s and 1980s to provide extra classrooms including science laboratories, library and specialist rooms as well as administrative, student and staff facilities. The multi-purpose hall and further extensions were constructed in 1992.

In 2010 the site of the new Trade Training Centre was blessed and dedicated on the day after the Canonisation of St Mary



MacKillop and the Centre which was blessed and opened on 16 May 2011 was named "The Saint Mary MacKillop Trade Training Centre".

ARCHITECTURE

St Joseph's High School has managed well for many years with sub-standard facilities in some areas. The Australian Government's Trade Training Centres in schools program was the first windfall which

provided a full capital grant to construct a new purpose made Trade Training facility, including construction workshops and storage, associated classroom space and an agricultural science area. The second unexpected bonus was a full capital grant to upgrade the schools ageing science laboratories. The hat trick came in 2011 with the offer of a significant Capital grant to demolish and rebuild purpose made teaching facilities and a resource centre. This project started in 2012 and is due for completion in the 2014 school year.

YEAR	DESCRIPTION	LOCAL CONTRIBUTION	GOVERNMENT GRANT	TYPE	PROJECT COST
1999	Construction of Library & Refurbishment of Classrooms	\$545,379	\$502,225	GCGP	\$1,047,604
2009	Upgrade of Electrical Reticulation	\$0	\$200,000	BER-NSP	\$200,000
2009	Refurbishment of Science Laboratories	\$106,654	\$873,346	BER-SLC	\$980,000
2009	Trade Training Centre – Metal & Engineering & Construction	\$280,558	\$1,236,714	TTC	\$1,517,272
2012	Construction of Library, Classrooms & Staff Facilities	\$3,400,000	\$3,500,000	GNE	\$6,900,000 Budget



Holy Spirit Infants School, Abermain

A:	Church Street ABERMAIN 2326 PO Box 11 WESTON 2326
P:	4930 4361
F:	4930 4363
E:	admin@abermain.catholic.edu.au
W:	http://abermain.catholic.edu.au
Enrolment:	84
Kindergarten to Year 2	
Region:	All Saints
Parish:	Kurri Kurri



HISTORY

A new church/school hall was opened in June 1908, and education began under the guidance of the Sisters of St Joseph who travelled from Cessnock each day until the Convent at Kurri Kurri was completed in 1909.

In 1935, alterations were made to create a separate classroom for each teacher. A new wooden school consisting of four classrooms and a Principal's Office was opened by Bishop Toohey in 1952. In 1966, St Joseph's Abermain became the Infants department of the Parish School, while the primary children were educated at St Joseph's Kurri Kurri. In 1980 the first lay principal to St Joseph's, Abermain was appointed.

In 1991, the school became known as Holy Spirit Infants School, in keeping with the name of the Kurri Kurri Parish.

The school facilities were rebuilt in 2007 and officially opened in July 2008 to coincide with the centenary of the school. A 'work for the dole' project enabled the 100 year old hall to have a facelift in time for the centenary celebrations.



ARCHITECTURE

The new canteen, pupil amenities and COLA and refurbishment of the school hall were the only elements left to be completed with the BER funding allocation, as the school had received a Capital grant in 2007 which provided a significant redevelopment of the school.



YEAR	DESCRIPTION	LOCAL CONTRIBUTION	GOVERNMENT GRANT	TYPE	PROJECT COST
1998	Upgrade of School Facilities	\$35,519	\$60,631	GNE	\$96,150
2004	Construction of Administration, staff, library, classrooms & store	\$400,167	\$805,407	ISOP	\$1,205,574
2009	Refurbishment of School Facilities - External & Internal	\$846	\$75,000	BER-NSP	\$75,846
2009	Refurbishment of Multi-Purpose Hall, Student Hall & Shade Structure	\$0	\$349,918	BER-P21	\$349,918



St Columba's Primary School, Adamstown

A: Lockyer Street ADAMSTOWN 2289
PO Box 288 ADAMSTOWN 2289

P: 4952 1642

F: 4952 2225

E: admin@adamstownsc.catholic.edu.au

W: <http://adamstownsc.catholic.edu.au>

Enrolment: 192

Kindergarten to Year 6

Region: Central

Parish: All Saints Blackbutt





HISTORY

St Columba's Primary School, Adamstown was established by the Sisters of Mercy from Hamilton in the 1890s. Although falling within the Parish of Burwood (Merewether) it was the Sisters of Mercy at Hamilton who established the newly opened church/school. The original school was opened in 1890 and was located in the wooden church built in that year. It was destroyed by a severe storm nine years later and in 1900 a new church/school was built and this served until 1930 when the present brick building was constructed. The Infants classrooms were built in the 1960s.

From 1890 until 1954, the Sisters travelled from Hamilton to Adamstown each day to teach. The parish purchased a house for them to use as a convent, named Marian House which served as their home until 1971. The school was staffed by the Sisters until 1971 and had a religious principal until 1986.



ARCHITECTURE

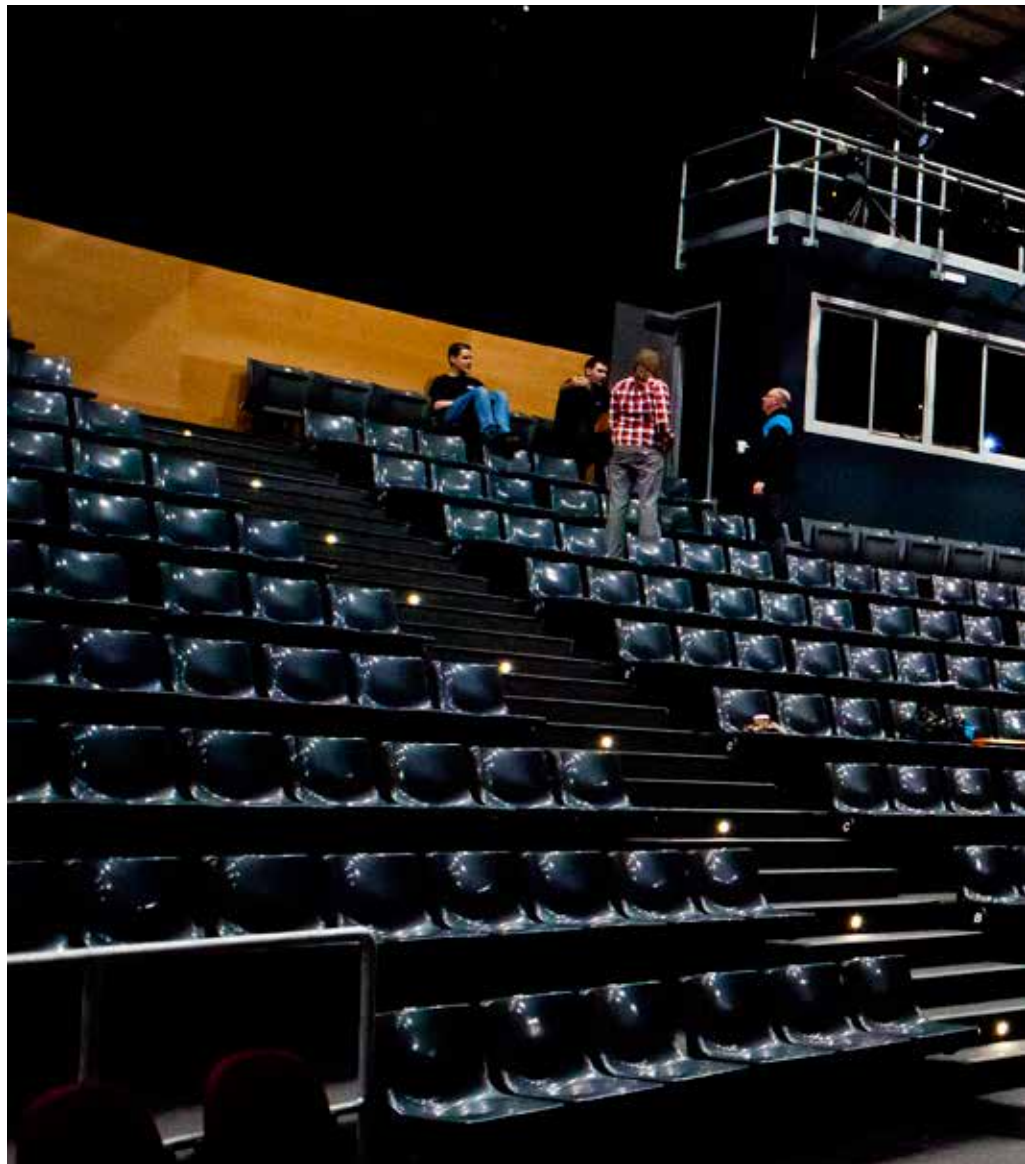
The constrained site and existing heritage buildings used by the school complicated the opportunity to redevelop the school through the BER. New classrooms, pupil amenities and a central COLA have created a more open and functional school. The existing hall was also refurbished improving its functionality and amenity.

YEAR	DESCRIPTION	LOCAL CONTRIBUTION	GOVERNMENT GRANT	TYPE	PROJECT COST
2009	Refurbishment of School Facilities - External & Internal, construction of Shade Structure & Procurement of School Equipment	\$5	\$125,003	BER-NSP	\$125,008
2009	Refurbishment of Multi-Purpose Hall and Construction of Associated Student Amenities, Classrooms & Associated Works	\$19,880	\$1,439,532	BER-P21	\$1,459,412



St Pius X High School, Adamstown

A:	Park Avenue ADAMSTOWN 2289 Park Avenue ADAMSTOWN 2289
P:	4957 1032
F:	4957 5088
E:	admin@adamstownsp.catholic.edu.au
W:	http://adamstownsp.catholic.edu.au
Enrolment:	1011
Years 7 to Year 10	
Region:	Central
Parish:	All Saints Blackbutt



HISTORY

The school came into existence in 1959 as a fulfilment of the late Bishop Toohey's dream of a school directed and fully staffed by diocesan priests. The school moved from Tighes Hill to its present site in 1961. The school was named to honour St Pius X, the first Pope of the Church canonised in the 20th Century. The new St Pius X College was purchased, reconstructed and renovated for school purposes at a cost of £170,000.

Originally a high school for boys, it became a co-educational Junior High School in 1983 as part of the restructuring of Catholic Secondary Schools in the Newcastle area. Building projects to cater for increased demand have occurred as the need arose.

In 2008 St Anne's Hall, where assemblies and meetings are held, was re-named Sr Marie Hall in honour of Sr Marie Therese Fahey, a Josephite Sister who had a long relationship of service to the school. The name 'St Anne's Hall' was a reminder of St Anne's College, a senior girl's high school that was opened adjacent to St Pius X High School in 1966 and run by religious sisters of the diocese. The vacated St Anne's buildings became incorporated into the St Pius X campus when the students transferred to the present St Francis Xavier's College, Hamilton in 1983.

Today the school is completely lay staff.



ARCHITECTURE

St Pius X Adamstown had seen no major refurbishment or capital works for many years until it received two separate rounds of Commonwealth grant funding in 2009 and 2010. The first stage of the project provided an opportunity to undertake a major refurbishment of the original factory building and convert it into open and flexible learning areas. The large span structure also provided the opportunity to incorporate a large multi-purpose performance space which has now become the focus for the school's interest in performing arts. The large saw tooth roof trusses provide invaluable natural light into the entire building and also leave us the opportunity to be completely flexible with the learning areas within the building. The refurbishment of the factory wing has been an excellent opportunity for the adaptive re use of a building that was originally considered for demolition.



YEAR	DESCRIPTION	LOCAL CONTRIBUTION	GOVERNMENT GRANT	TYPE	PROJECT COST
2009	Refurbishment of School Facilities - External & Internal	\$56	\$200,221	BER-NSP	\$200,277
2009	Stage 1, Refurbishment of Classrooms, Administration & Multi-Purpose Hall	\$3,093,889	\$2,488,706	GNE	\$5,582,595
2009	Trade Training Centre - Hairdressing Salon & Hospitality Commercial Kitchen	\$0	\$600,000	TTC	\$600,000 Budget
2011	Stage 2, Refurbishment of Science & TAS Classrooms	\$2,000,000	\$1,583,189	BGAS	\$3,583,189 Budget



St Francis Xavier's Primary School, Belmont

A:	Ernest Street BELMONT 2280 PO Box 206 BELMONT 2280
P:	4945 2404
F:	4945 8095
E:	admin@belmont.catholic.edu.au
W:	http://belmont.catholic.edu.au
Enrolment:	116
Kindergarten to Year 6	
Region:	Lakes
Parish:	East Lake Macquarie



HISTORY

St Francis Xavier's Primary School is situated close to Belmont Lagoon, an important site for the Awabakal people.

St Francis Xavier's Primary School was officially opened on 31 January, 1950 as St Joseph's Primary School by Rev. Eris O'Brien, Auxiliary Bishop to Cardinal Gilroy. Belmont was originally part of the parish of Swansea, a parish of the Archdiocese of Sydney until 1966. The school was staffed by the Sisters of St Joseph from Lochinvar, Srs M Virgilius and Callista were the first teachers. They lived at Swansea Convent and travelled to Belmont each day crossing Swansea Channel in a row boat to catch the bus to school. The original wooden 'L' shaped building consisted of

three classrooms and a verandah. It was built at a cost of £5200 - £2000 over the original estimate which, for a very small parish, was a huge financial commitment.

When the numbers of Sisters increased, a cottage was acquired as a Convent on the Belmont site on 25 January 1951. In the 1960s a two storey building was also used as a high school for several years. By the mid 1990s the old wooden building was replaced and in 1997 the school was transformed by a \$1.2 million construction and refurbishment program which included the construction of an administration area, classrooms, library, canteen, amenities and the refurbishment of classrooms and the playground.

ARCHITECTURE

The limited and sloping site at St Francis Xavier's Primary School and the existing parish facilities limited the school's ability to build new facilities with the BER funding. They did however undertake some clever refurbishment of their library and classrooms and significantly enhanced their playground area.



YEAR	DESCRIPTION	LOCAL CONTRIBUTION	GOVERNMENT GRANT	TYPE	PROJECT COST
2009	Refurbishment of School Facilities - External & Internal, Construction of Security Fence	\$0	\$75,000	BER-NSP	\$75,000
2009	Refurbishment of Classrooms, Library & Associated Works	\$0	\$850,000	BER-P21	\$850,000



St Paul's High School, Booragul

A:	Primrose Street BOORAGUL 2284 PO Box 194 BOOLAROO 2284
P:	4958 6711
F:	4958 6145
E:	admin@booragul.catholic.edu.au
W:	http://booragul.catholic.edu.au
Enrolment:	972
Year 7 to Year 12	
Region:	Lakes
Parish:	Booragul



HISTORY

St Paul's High School commenced in February 1984. The impetus for the establishment of a Catholic high school to serve the Westlakes Region came originally from parents, and as far back as 1972, a committee was set up in the parish of Toronto to work towards establishing a high school. The opening of St Paul's High School coincided with the restructuring of Catholic Secondary Schools in the Newcastle area. The school opened with 240 pupils and 16 teachers and was fully staffed. Mr David Moore was the founding principal.

Over the past ten years significant works have been undertaken at the school including the construction of new classrooms, speciality classrooms, canteen and extensive refurbishment of staff facilities, administration and library areas.

ARCHITECTURE

Enrolments at St Paul's High School, Booragul have been growing steadily over the last several years. Recent Trade Training Centre funding provided an opportunity to construct state of the art hospitality facilities and a new specialised construction course building. A Capital Grant has been received through the Building Grants Assistance Scheme (BGAS) which is a State funded capital program which replaced interest subsidy. The project will be the first stage of additional development on the site to replace a fleet of existing demountable classroom buildings. This first stage will include construction of a new library learning centre and classroom block in the centre of the school and then the refurbishment of some classroom spaces. Further stages of work identified in the master plan will allow for the construction of additional classrooms to replace more demountables. The school will look for opportunities to seek more grant funding in the years to come.



YEAR	DESCRIPTION	LOCAL CONTRIBUTION	GOVERNMENT GRANT	TYPE	PROJECT COST
1999	Stage 2, Classrooms & Specialty Teaching Rooms	\$390,000	\$910,000	GNE	\$1,300,000
2000	Construction of Classrooms, Canteen, Hall & Performing Arts	\$645,098	\$1,505,229	GNE	\$2,150,327
2009	Refurbishment of School Facilities - External, Upgrade of Electrical Reticulation, Construction of Security Fence	\$268	\$200,000	BER-NSP	\$200,268
2009	Trade Training Centre - Construction & Hospitality Commercial Kitchens	\$0	\$3,154,427	TTC	\$3,154,427
2013	Construction of General Learning Area & Specialised Library Area, Administration & Covered Outdoor Learning Area.	\$2,178,150	\$2,691,850	BGAS	\$4,870,000



Rosary Park Catholic School, Branxton

A:	Station Street BRANXTON 2335 Station Street BRANXTON 2335
P:	4938 1541
F:	4938 1542
E:	admin@branxton.catholic.edu.au
W:	http://branxton.catholic.edu.au
Enrolment:	205
Kindergarten to Year 6	
Region:	All Saints
Parish:	Branxton



HISTORY

Rosary Park Catholic School is a new school for Kindergarten to Year 6 students that opened in Term 3, 2011 after more than 12 months of construction. It was built on parish land across the road from the original St Brigid's Primary School at Branxton. It replaces two schools, St Brigid's Primary School, Branxton and St Mary's Infants School, Greta which have since been closed.

The schools originally commenced on the same day in 1886 at the request of Bishop Murray and were staffed by the Sisters of Mercy from Singleton who lived in a rented cottage until their convent was built in 1889. On their arrival in Branxton, the Sisters were presented with a buggy so as to convey the Sisters to and from Greta each day.

St Mary's School at Greta was named after the old wooden church built in 1882 where classes were first held. In 1900 at the behest

of Bishop Dwyer a separate school building was constructed. A new school building which had been erected in 1955 remained the core of the school until its closure in 2011.

St Brigid's School operated from the old church building which was extended in 1888 to accommodate the growing number of pupils. In 1916 a major addition was made to the old church building to provide classrooms for the primary students while the infants classes continued in the original building. By 1967 the building had become unsafe and in that year a new school was constructed on the same site as the old.

Originally St Mary's, like Branxton, enrolled both infants and primary pupils but with the rationalisation of schools during 1960s, Greta became the Infants school and Branxton the primary school for the Branxton-Greta parish.



ARCHITECTURE

The BER program allowed for the amalgamation of St Mary's Infants School at Greta and St Brigid's Primary School at Branxton. The Greenfield site donated by the parish community allowed for the construction of a new school on Station Street, including a multi-purpose hall, library, staff and administration block and some new classrooms. Demountable classrooms make up the shortfall of space until funding can be secured to complete the development.



YEAR	DESCRIPTION	LOCAL CONTRIBUTION	GOVERNMENT GRANT	TYPE	PROJECT COST
2009	Construction of Security Fencing & Procurement of Furniture & Equipment	\$0	\$74,997	BER-NSP	\$74,997 *
2009	Construction of Security Fencing & Procurement of Furniture & Equipment	\$0	\$75,000	BER-NSP	\$75,000 #
2009	Construction of Multi-Purpose Hall, Classrooms, Library & Administration/ Staff Facilities	\$508,125	\$4,809,485	BER-P21	\$5,317,610 #

* Funding originally allocated to Greta, St Mary's Infants School
 # Funding originally allocated to Branxton, St Brigid's Primary School



St Joseph's Primary School, Bulahdelah

A:	26C Bulahdelah Way BULAHDELAH 2423 PO Box 2 BULAHDELAH 2423
P:	4997 4189
F:	4997 4216
E:	admin@bulahdelah.catholic.edu.au
W:	http://bulahdelah.catholic.edu.au
Enrolment:	55
Kindergarten to Year 6	
Region:	Manning
Parish:	Myall Coast

HISTORY

Catholic education began in the Manning region in 1893 when the Sisters of Saint Joseph established a convent and school at nearby Krumbach, then Larry's Flat in the Taree area.

The Lochinvar congregation of the Sisters of St Joseph came to Bulahdelah in 1955 at the request of Fr Ross to run the new parish school. The Sisters lived in the former presbytery which had been built in 1927. From 1958 to 1966 the Sisters also conducted a Junior High School on the site. With the withdrawal of the Sisters in the late 1990s it became part of the parish school complex.

In 2006 a new school was built as part of the capital works program to provide a modern well-resourced teaching environment in a pleasant rural environment.

The school features an Aboriginal artwork and accompanying story about the school in the local area. It shows the two rivers symbolising the Myall and Crawford Rivers or 'meeting of waters' which is the Aboriginal meaning of the word Bulahdelah and it shows the Alum Mountain, the school and town in the background.



ARCHITECTURE

St Joseph's Primary School was essentially rebuilt with a significant Capital grant in 2006. This small regional community was therefore happy to share a majority of its BER allocation with other needy schools in the diocese. They did however provide more covered outdoor learning areas and shade shelter for their playground equipment and undertook other minor improvements to complete their school.





YEAR	DESCRIPTION	LOCAL CONTRIBUTION	GOVERNMENT GRANT	TYPE	PROJECT COST
2002	All new school buildings	\$757,893	\$539,807	GNE	\$1,297,700
2009	Refurbishment of School Facilities - External & Internal, Construction of Security Fence	\$0	\$49,977	BER-NSP	\$49,977
2009	Construction of Covered Outdoor Learning Area	\$0	\$49,950	BER-P21	\$49,950

ST KEVIDS CARDIFF



St Kevin's Primary School, Cardiff

A: Main Road CARDIFF 2285
PO Box 116 CARDIFF 2285

P: 4954 0036

F: 4954 3282

E: admin@cardiff.catholic.edu.au

W: <http://cardiff.catholic.edu.au>

Enrolment: 93

Kindergarten to Year 6

Region: Lakes

Parish: All Saints Blackbutt





HISTORY

When the Sisters of St Joseph first arrived in Cardiff, the Catholic 'complex' consisted of the original wooden church built in 1906 and the convent. Three Sisters of St Joseph first taught at St Kevin's in July 1917 when the school was known as St Joseph's Primary School. Cardiff had the largest enrolment in the parochial district of Lambton and by the end of 1928 a fourth Sister joined the school. In 1939 when the parish of Cardiff became autonomous from Lambton, a fifth Sister began teaching at the school.

The wooden school building, which was the original church, was destroyed by fire in October 1942. Because of the war, building materials were in short supply and a new school didn't open until June 1944. In the meantime classes were held in various nearby locations such as an old shop and tin shed. Some extensions were added in 1969 to cater for increased enrolments and major extensions were completed in 1992. In 1989 the school changed its name from St Joseph's to St Kevin's in line with the parish name. The Sisters of St Joseph served at the school for 75 years with the last Sister finishing in December 1991. Over the years more than 125 Sisters of St Joseph served the Catholic community of Cardiff.



ARCHITECTURE

The site at St Kevin's Primary School is a challenging one. Located on a south facing sloping site, adjacent to the main Newcastle rail corridor, the opportunities for development were limited. The architect however, has achieved an efficient and well blended new multi-purpose facility with associated pupil amenities, canteen and attached COLA. The existing library was also refurbished with the balance of BER funding available.

YEAR	DESCRIPTION	LOCAL CONTRIBUTION	GOVERNMENT GRANT	TYPE	PROJECT COST
2009	Refurbishment of Buildings & Grounds, Construction of Security Fence	\$1	\$75,000	BER-NSP	\$75,001
2009	Construction of Multi-Purpose Hall & Refurbishment of Library	\$4,491	\$851,049	BER-P21	\$855,540



St Patrick's Primary School, Cessnock

A:	155 Wollombi Road CESSNOCK 2325 PO Box 489 CESSNOCK 2325
P:	4990 3152
F:	4990 3641
E:	admin@cessnock.catholic.edu.au
W:	http://cessnock.catholic.edu.au
Enrolment:	356
Kindergarten to Year 6	
Region:	All Saints
Parish:	Cessnock



HISTORY

The Catholic identity of St Patrick's Cessnock has its foundations in its long association with the Sisters of St Joseph commencing in January 1887 with the formation of the first Catholic school in the area at St Patrick's Church at Nulkaba. A new church was built in 1893 and the old church/school fitted with permanent fixtures and converted to St Patrick's School. In July 1906 the hall was moved to the High Street site and furnished as a school. It also served as a temporary church and was known as St Joseph's church/school. The Sisters of St Joseph also conducted schools at Mount Saint Joseph, Cessnock (1906-1965) and at Bellbird (1937-1958).

In 1937 St Patrick's School was relocated from Nulkaba to Wollombi Road and for many years was known as St Patrick's, West Cessnock. The school was built from timber sourced from the Nulkaba presbytery and the Great Northern Hotel in Newcastle. In 1958 the small school at Bellbird closed and the students transferred to St Patrick's. When the Infants school at Mount Saint Joseph's closed in 1965 all Catholic education in Cessnock was located on one site at Wollombi Road.

On 23 August 1970 Bishop Toohey blessed and opened a new brick school complex to replace the ageing buildings. As the school numbers grew, additional classes were held in demountable rooms. In 1996 the brick school was extended to provide a new administration area, a much larger library and a refurbished staffroom.

In 2007 a new wing was built to provide much needed amenities for staff and students.

ARCHITECTURE

St Patrick's Primary School was the beneficiary of a major Capital grant in 2007 which provided a new administration and staff building as well as some new teaching spaces. The BER funding has provided the opportunity to complete the school with the construction of a new library and multi-purpose space on this very constrained site. There was also some funding available to refurbish remaining classrooms and the very tired playground area was completely resurfaced.





YEAR	DESCRIPTION	LOCAL CONTRIBUTION	GOVERNMENT GRANT	TYPE	PROJECT COST
2004	Construction & Refurbishment of Classrooms, Staff & Library	\$860,057	\$759,758	GNE	\$1,619,815
2009	Refurbishment of Buildings & Roof Replacement	\$0	\$149,955	BER-NSP	\$149,955
2009	Construction of Multi-Purpose Hall, Library & Classrooms	\$2,242	\$1,984,132	BER-P21	\$1,986,374



St Joseph's Primary School, Charlestown

A: Shelton Street CHARLESTOWN 2290
Shelton Street CHARLESTOWN 2290

P: 4943 5414

F: 4942 3218

E: admin@charlestown.catholic.edu.au

W: <http://charlestown.catholic.edu.au>

Enrolment: 276

Kindergarten to Year 6

Region: Lakes

Parish: MacKillop





HISTORY

St Joseph's Primary School, Charlestown was founded by four Sisters of St Joseph in July 1927 at the invitation of Fr Grace, Parish Priest of Adamstown which at that time included Charlestown. Classes were held in the Church of Mary Immaculate which had been built in 1904. The initial enrolment was fifty children. As Charlestown developed, enrolments increased and four weatherboard classrooms were added. In 1968 an additional two portable classrooms were erected on the very limited site which was inadequate and unsuitable for further development.

In May 1973 a building grant was received from the Australian Government and a new school was built in a natural bushland setting at the end of Shelton Street. The school was officially opened on 28 September 1975.



ARCHITECTURE

St Joseph's Primary School used its BER funding allocation very judiciously in two separate stages. The main element of building works involved the construction of a new library and learning facility right in the geographic centre of the school, and the other stage was a major reconfiguration of the administration and staff area which also provided level access and a welcoming facade as the new front door to the school. The new library is a contrasting building with a light and bright aspect and invites you into the space with its large areas of glass. Colourful and comfortable furniture is also a lure for children to spend time reading and relaxing in the space.

YEAR	DESCRIPTION	LOCAL CONTRIBUTION	GOVERNMENT GRANT	TYPE	PROJECT COST
2009	Refurbishment of School Facilities - External & Internal, Classrooms Joinery Works	\$2	\$125,000	BER-NSP	\$125,002
2009	Construction of Library & Refurbishment of Administration, Staff Facilities & Classrooms	\$29,349	\$2,000,000	BER-P21	\$2,029,349

St Aloysius Catholic Primary School, Chisholm

A:	Heritage Drive, CHISHOLM 2335
P:	4979 1207 (CSO)
F:	4979 1209 (CSO)
E:	info@mn.catholic.edu.au (CSO)
W:	www.mn.catholic.edu.au (CSO)
Enrolment:	tba
Kindergarten to Year 6	
Region:	All Saints
Parish:	Morpeth

HISTORY

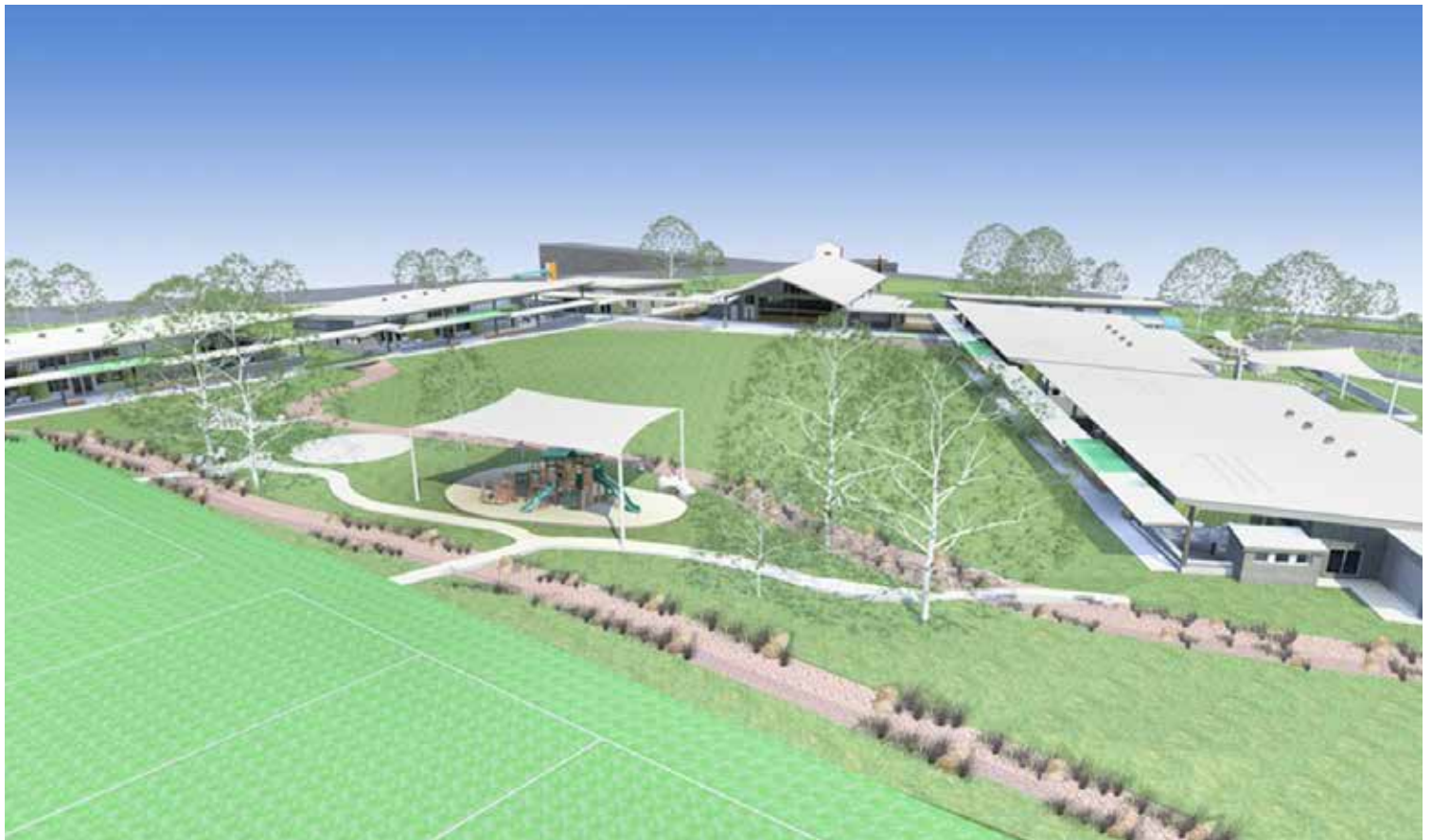
New school to be constructed. Work to commence in 2014 and open in 2015.

ARCHITECTURE

St Aloysius Catholic Primary School is a proposed new school for Kindergarten to Year 6 students designed to cater for the rapidly expanding Maitland area, one of the fastest growing areas in NSW and the Catholic Diocese of Maitland-Newcastle. The new school will be a two stream primary school with an eventual capacity of 420 students and provision for a Secondary school in the future. The new school is scheduled to open in 2015. The site of the new school is on a parcel of land within the Waterford County residential subdivision at Thornton North.

The new school will be ecologically sustainable and accessible for all, with flexible learning spaces and a contemporary design.





YEAR	DESCRIPTION	LOCAL CONTRIBUTION	GOVERNMENT GRANT	TYPE	ESTIMATE BUDGET
2013	Construction of New Primary School Stage 1	\$4,000,000	\$3,000,000 Estimate	GNE	Budget of \$7,000,000



St Joseph's Primary School, Denman

A:	80 Palace Street DENMAN 2328 80 Palace Street DENMAN 2328
P:	6547 2496
F:	6547 1078
E:	admin@denman.catholic.edu.au
W:	http://denman.catholic.edu.au
Enrolment:	88
Kindergarten to Year 6	
Region:	Upper Hunter
Parish:	Denman





HISTORY

Catholic education in Denman began in the Wybong area in 1901 with students attending a small school run by the Sisters of St Joseph. In 1916 the school and convent was moved to its present site in Palace Street Denman. The school operated as a parish primary school and a girls boarding school until 1968.

In June 1954 Bishop Toohey blessed and opened a new wooden school which the parishioners had built with support from the local community. When the boarding school closed, the boarding facilities were converted to infants classrooms. With the opening of the new St Bernard's Church in 1980, the school was able to use the old church as a school hall and canteen.

By 1994 the school facilities required much needed improvements. The parish, with the help of a bequest from the Moylan family, purchased a complex of demountable buildings which included a classroom for senior students, a library, staffroom and administration area.



ARCHITECTURE

St Joseph's Primary School at Denman had been operating from mostly demountable buildings for many years. The allocated BER funding, as well as a significant contribution from other schools in the diocese, gave the community the opportunity to build some more permanent and suitable facilities for this small yet growing country school. The funding was enough to build a new library and classroom as well as a new staff and administration area and also new pupil amenities.

YEAR	DESCRIPTION	LOCAL CONTRIBUTION	GOVERNMENT GRANT	TYPE	PROJECT COST
2009	Refurbishment of Buildings and Grounds, Data & Communication Equipment & Infrastructure	\$2	\$50,000	BER-NSP	\$50,002
2009	Construction of Library, Administration, Staff & Amenities, Refurbishment of Classrooms & Associated Works	\$284,923	\$750,000	BER-P21	\$1,034,923



St Joseph's Primary School, Dungog

A:	49 Brown Street DUNGOG 2420 49 Brown Street DUNGOG 2420
P:	4992 1377
F:	4992 3171
E:	admin@dungog.catholic.edu.au
W:	http://dungog.catholic.edu.au
Enrolment:	85
Kindergarten to Year 6	
Region:	All Saints
Parish:	Dungog



HISTORY

In 1888 the town of Dungog had no electricity, reticulated water supply, sanitary services, motor cars, telephones, dairy industry, railway or hospital. However the Sisters of St Joseph arrived in the company of Bishop Murray to establish Catholic education in the area. Fr McAuliffe with the help of his parishioners established a convent and a parish school. In January 1889 part of the Dowling Street cottage was converted into a small classroom.

In 1892 a new convent/school was built on the present location in Brown Street. The school continued to grow. In 1913 Bishop Dwyer opened a new brick school room which was extended in 1923. A new block of classrooms was opened in 1952 and in 1976 the school building from St Joseph's School at Brookfield which had operated from 1889 to 1957 was relocated to the Dungog site to provide additional classrooms and facilities.

The Sisters of St Joseph taught in the school until 1986. In 1997 the Sisters moved from the original convent in Brown Street and the residence was converted to provide an administration centre for the school.

ARCHITECTURE

St Joseph's was the recipient of a major Capital grant and redevelopment in 2007 when it received enough funding to construct new classrooms and pupil amenities and refurbish and extend the historic staff and administration block. This community was also happy to share some of its BER allocation to other schools in the diocese, although some new facilities were constructed and smaller elements of work left undone after the 2007 redevelopment was completed.





YEAR	DESCRIPTION	LOCAL CONTRIBUTION	GOVERNMENT GRANT	TYPE	PROJECT COST
2004	Construction & Refurbishment of Classrooms & Canteen	\$689,854	\$657,465	GNE	\$1,347,319
2009	Refurbishment of School Facilities - External & Internal & Construction of COLA	\$1	\$75,000	BER-NSP	\$75,001
2009	Construction of Sports Storage Area, Refurbishment of External Play Areas	\$0	\$150,000	BER-P21	\$150,000



St Joseph's Primary School, East Maitland

A:	55 King Street EAST MAITLAND 2323 PO Box 540 EAST MAITLAND 2323
P:	4933 5536
F:	4934 7075
E:	admin@eastmaitland.catholic.edu.au
W:	http://eastmaitland.catholic.edu.au
Enrolment:	411
Kindergarten to Year 6	
Region:	All Saints
Parish:	East Maitland



HISTORY

St Joseph's school and the parishes of East Maitland and Morpeth are rich in history. From the early days of Fr Therry (1835) and the Sisters of Mercy, Catholic education in East Maitland can be traced back to as early as 1834. It is believed that St Joseph's School was already operating when the Sisters of Mercy came to East Maitland in 1885 to take a central role in the ongoing development of the school.

Lessons were held in the convent rooms until 1925, when the older section of the current primary school building was blessed and opened. The larger classroom block was opened in 1957. The growing demands of the East Maitland community saw the opening of St Vincent's Eastville in 1961 and St Mary's Tenambit in 1965.

St Francis Xavier's School at Morpeth closed at the end of 1969 and in 1970 St Vincent's and St Mary's became the infants schools for the East Maitland and Morpeth parishes. Students from Years 3 to 6 attended St Joseph's East Maitland.

In 1999 the decision was made to close the infants schools, bringing all students together on one site. After an extensive building program the refurbished St Joseph's Primary School opened on 29 April 2002 next to St Joseph's Church.



ARCHITECTURE

Having also received a Capital grant in 2002, St Joseph's was significantly redeveloped with the construction of a new library, classrooms and canteen, and the refurbishment of the historic staff and administration block. Also happy to share its notional BER allocation with other diocesan schools still awaiting major redevelopment, St Joseph's used some of its allocation to complete the school. A lift was installed to provide greater accessibility to the staff and administration building, the library was extended, some classrooms were refurbished and some major playground improvements were made.



YEAR	DESCRIPTION	LOCAL CONTRIBUTION	GOVERNMENT GRANT	TYPE	PROJECT COST
2009	Refurbishment of School Facilities - External & Internal, Construction of Security Fence, Procure ICT Equipment & Infrastructure	\$2	\$200,000	BER-NSP	\$200,002
2009	Refurbishment of School Buildings & Library	\$0	\$1,500,000	BER-P21	\$1,500,000



St Benedict's Primary School, Edgeworth

A:	839 Main Road EDGEWORTH 2285 PO Box 4063 EDGEWORTH 2285
P:	4958 1858
F:	4958 4069
E:	admin@edgeworth.catholic.edu.au
W:	http://edgeworth.catholic.edu.au
Enrolment:	245
Kindergarten to Year 6	
Region:	Lakes
Parish:	Sugarloaf





HISTORY

St Benedict's was opened in 1962 and was staffed by Sister Cabrini and Sister Anne Mary of the Sisters of St Joseph, Lochinvar. Fr Bernard Kennedy had purchased land on Main Road and with the help of parishioners converted wooden buildings from the Greta Migrant Camp to provide a church and school for the growing community of Edgeworth. Over sixty pupils from Kindergarten to Fourth Class formed the first enrolment. In all, five huts from Greta were transported to the present site for school, convent and parish use.

During the 1960s Edgeworth became the infants school for the West Wallsend / Edgeworth Parish. When St Joseph's Primary School, West Wallsend closed in 1978, St Benedict's became a full primary school for the area.

As the area developed, the school population increased and it became necessary to expand. Extensions to the school were added in the 1980s and in 1994 a new administration block, three classrooms and



modern canteen facilities were opened. One of the migrant huts remains as a link to the past as it is used for a prayer room, parish meeting place and counselling centre.

ARCHITECTURE

St Benedict's Primary School received a major Capital grant in 2007 and the funds were used to replace demountable classrooms with permanent teaching spaces and also a new school library. The BER funding was perfectly timed then to deliver a new multi-purpose hall and some further new classrooms to replace the remaining demountables on site.

YEAR	DESCRIPTION	LOCAL CONTRIBUTION	GOVERNMENT GRANT	TYPE	PROJECT COST
2004	Construction of Classrooms	\$880,419	\$1,070,934	ISOP	\$1,951,353
2009	Construct COLA, Refurbishment of School Facilities - External & Upgrade of Electrical Reticulation	\$1	\$125,000	BER-NSP	\$125,001
2009	Construction of Multi-Purpose Hall & Classrooms	\$26,573	\$2,001,595	BER-P21	\$2,028,168



Holy Name Primary School, Forster

A:	41 Lake Street FORSTER 2428 PO Box 243 FORSTER 2428
P:	6554 6504
F:	6554 8895
E:	admin@forster.catholic.edu.au
W:	http://forster.catholic.edu.au
Enrolment:	335
Kindergarten to Year 6	
Region:	Manning
Parish:	Forster-Tuncurry



HISTORY

Holy Name Primary School was opened in 1961 as a result of the combined efforts of Fr Bernasconi and Fr Linehan, the Sisters of St Joseph and members of the parish community.

In June 1957, Fr Linehan purchased land in Lake Street and in December 1957 a new church hall was opened. This was used for the celebration of Mass and other church activities until it was converted to a school in 1959, upon the arrival of the Sisters of St Joseph from Lochinvar. The Forster Presbytery was built on land adjacent to the church hall and opened in January 1959. The Sisters of St Joseph purchased a property at 16 Manning Street, Tuncurry which became St Joseph's Convent. Until the bridge linking Tuncurry and Forster was completed later in 1959 the Sisters and students travelled by launch across the entrance to Wallis Lakes.

In 1960 the land on which the present school is situated was purchased and in January, 1961, Bishop Toohey blessed and opened a new brick school consisting of three classrooms and other facilities. As the population of Forster-Tuncurry grew extra buildings and renovations occurred in 1974 and 1983. With the support of Holy Name parish and the parent body, a \$1.4 million project which included a new administration building and a school hall was completed in 2004.

ARCHITECTURE

Holy Name Primary School used the BER funding to consolidate the refurbishment of school facilities, including reconfiguration and extension of their library and staff areas, and refurbishment and construction of classrooms to replace two demountable classrooms on site. Some of the funding was also used to enhance the school's limited playground areas.





YEAR	DESCRIPTION	LOCAL CONTRIBUTION	GOVERNMENT GRANT	TYPE	PROJECT COST
2001	Construction of Hall, Administration & Staff Facilities, Student Amenities, Refurbishment of Classroom & Computer Room	\$891,307	\$551,208	GNE	\$1,442,515
2009	Refurbishment of School Facilities - External & Internal, Construction of Security Fence & Shade Structure	\$0	\$125,001	BER-NSP	\$125,001
2009	Refurbishment of Classrooms & Associated Works & Extension of Library & Associated Works	\$0	\$1,498,951	BER-P21	\$1,498,951



St Mary's High School, Gateshead

A: Pacific Highway GATESHEAD 2290
PO Box 4021 GATESHEAD 2290

P: 4944 4800

F: 4944 4827

E: admin@gatesheadsm.catholic.edu.au

W <http://gatesheadsm.catholic.edu.au>

Enrolment: 541

Years 7 to Year 10

Region: Lakes

Parish: MacKillop





HISTORY

In 1963 the Sisters of St Joseph Lochinvar purchased 5½ acres of land on the Pacific Highway, Gateshead as the site for a new High School. St Mary's High School was opened in January 1964. The new school which was designed and built by V F Doran and Sons was a steel framed brick structure costing in the vicinity of £100,000. It was a high school for girls catering for students from Charlestown, Belmont and Swansea where the Sisters of St Joseph already had primary schools.

The secondary classes from Belmont were transferred to the newly opened St Mary's School, Gateshead. St Mary's Convent at Gateshead was opened in 1964 with ten Sisters in residence.

The Catholic Education Office took financial responsibility for the school in 1971.

In 1983 the school began its transition to a Junior Secondary Coeducational High School as part of the restructuring of Catholic

Secondary Schools in the Newcastle area. Throughout the 1980s several building programs were conducted to meet the requirements of coeducation and growing enrolments.

ARCHITECTURE

St Mary's was teaching food technology in less than ideal facilities for many years until a successful Commonwealth grant in 2006 provided the opportunity to construct new purpose designed food tech teaching spaces as well as new science and music classrooms. The facilities were constructed at the back of the school site and included a large COLA or shade space adjacent to the main playing fields. BER funding provided to St Paul's Primary School, created a collaborative opportunity for the sharing of built resources. Located adjacent to St Mary's, St Paul's was happy to locate its large BER funded multi-purpose hall so that both schools could share in the use of this invaluable facility.

YEAR	DESCRIPTION	LOCAL CONTRIBUTION	GOVERNMENT GRANT	TYPE	PROJECT COST
2005	Construction of Music Rooms, Student Facilities, Science Laboratory, Senior Learning Area & TAS Area	\$726,159	\$970,824	GNE	\$1,696,983
2009	Construct COLA, Refurbishment of School Facilities - External & Upgrade of Electrical Reticulation	\$2	\$200,000	BER-NSP	\$200,002
2009	Trade Training Centre - Dust Control & Fume Extraction & Agricultural Equipment	\$0	\$62,830	TTC	\$62,830
2011	Science Laboratories Refurbishment	\$700,000	\$0	Special	\$700,000



St Paul's Primary School, Gateshead

A:	Felton Street GATESHEAD 2290 Felton Street GATESHEAD 2290
P:	4943 6369
F:	4943 1414
E:	admin@gatesheadsp.catholic.edu.au
W:	http://gatesheadsp.catholic.edu.au
Enrolment:	216
Kindergarten to Year 6	
Region:	Lakes
Parish:	MacKillop



HISTORY

The Parish of St Paul's Gateshead was established in 1963 with Fr Roger Kennedy as Parish Priest and coincided with the Public Housing development in Gateshead West. In 1964 the infants school began in two classrooms in St Mary's High School until the new church/school opened in May 1964. It was staffed by two Sisters of St Joseph. By 1967 the school was able to cater for classes up to Year 6. School numbers grew rapidly and in 1973 the school had grown to 14 classes housed in a variety of buildings from across the region relocated on the site.

St Paul's school moved into its new premises in August 2002. The decision to upgrade the existing school was due to the age of the buildings and the changing needs of the school community. It took three years of planning and construction work involving the parish, school and diocesan communities as well as Federal and State governments. Total cost of the project was \$2,165,269.

ARCHITECTURE

St Paul's Primary School was completely rebuilt with a major Capital grant in 2002. The BER funding provided the perfect opportunity to complete the school's facilities by construction of a large multi-purpose hall, library extension and refurbishment of the school's performance space and canteen. The construction of the hall on the land adjacent to St Mary's High School also provides the opportunity for this facility to be shared with the broader Catholic school community.





YEAR	DESCRIPTION	LOCAL CONTRIBUTION	GOVERNMENT GRANT	TYPE	PROJECT COST
2001	Construction of Classrooms & Student Facilities	\$649,583	\$1,515,686	GNE	\$2,165,269
2009	Refurbishment of School Facilities - Internal & Procure ICT Equipment & Infrastructure	\$0	\$122,728	BER-NSP	\$122,728
2009	Construction of Multi-Purpose Hall & Refurbishment of Library	\$17,937	\$2,500,000	BER-P21	\$2,517,937



Holy Cross Primary School, Glendale

A:	326 Lake Road GLENDALE 2285 30 Oakland Street GLENDALE 2285
P:	4954 8471
F:	4956 5752
E:	admin@glendale.catholic.edu.au
W:	http://glendale.catholic.edu.au
Enrolment:	89
Kindergarten to Year 6	
Region:	Lakes
Parish:	Sugarloaf





HISTORY

Fr John Lavery invited the Sisters of Mercy to start the school in a small cottage on Lake Road, Glendale in 1958. The Sisters of Mercy travelled each day from their convent in Lambton to teach at Glendale until their convent was completed in 1961.

A four-roomed brick veneer building was erected for the primary school on the present site. This together with the secondary school and convent which were housed in buildings transported from the Wangi Power Station and Greta Migrant Camp were blessed and opened by Bishop Toohey in 1961. The Girls' High School operated on the site from 1961 to 1967. When the high school closed the wooden buildings were used for some time as primary classrooms. An 'open plan' style building known as 'The Unit' was constructed in 1975.



ARCHITECTURE

The BER funding provided an overdue opportunity to undertake a major refurbishment to this small primary school. The extent of works has completely transformed the layout and feel of the school and new classrooms and library are light and bright with good natural ventilation and access to outdoor learning areas. The new administration building located at the front of the school has provided a welcoming and controlled entry point and the fit out of classrooms with innovative and comfortable furniture now provides students with a contemporary learning environment.

YEAR	DESCRIPTION	LOCAL CONTRIBUTION	GOVERNMENT GRANT	TYPE	PROJECT COST
2009	Refurbishment of School Facilities - Internal & Roof Replacement	\$0	\$75,000	BER-NSP	\$75,000
2009	Construction of Library, Staff, Classrooms, Administration & Amenities	\$7,832	\$3,420,000	BER-P21	\$3,427,832



St Joseph's Primary School, Gloucester

A: Denison Street GLOUCESTER 2422
PO Box 83 GLOUCESTER 2422

P: 6558 1555

F: 6558 9123

E: admin@gloucester.catholic.edu.au

W: <http://gloucester.catholic.edu.au>

Enrolment: 38

Kindergarten to Year 6

Region: Manning

Parish: Gloucester





HISTORY

St Joseph's Primary School was opened in 1919 when the Sisters of St Joseph arrived in Gloucester which was then part of the Dungog Parish. Initially classes were held in the 1907 church building, which was divided into classrooms. An additional classroom for infants was established in 1951 in a converted garage. This was later replaced by a weatherboard building for the primary classes.

The new brick church was opened in 1954 and the Sisters continued to teach classes there until the new school building was blessed and opened by Bishop Toohey in 1969.

The Sisters of St Joseph taught in Gloucester for 67 years until the end of 1986. In 1987 the first lay principal was appointed and the school is now totally staffed by lay people.

ARCHITECTURE

Although only a small country school, the BER allocation provided a great opportunity to upgrade the school's library and also construct a new and practical school hall which can be used for many different school and community functions. The hall has a wide "fire station" door opening up to an adjacent north facing courtyard to allow for the overflow of larger groups attending a function.

YEAR	DESCRIPTION	LOCAL CONTRIBUTION	GOVERNMENT GRANT	TYPE	PROJECT COST
2009	Refurbishment of School Facilities - External & Internal	\$0	\$75,000	BER-NSP	\$75,000
2009	Construction of Multi-Purpose Hall & Refurbishment of Library	\$1	\$848,110	BER-P21	\$848,111



St Francis Xavier's College, Hamilton

A:	286 Parkway Avenue HAMILTON 2303 PO Box 300 HAMILTON 2303
P:	4961 2863
F:	4961 2384
E:	admin@hamilton.catholic.edu.au
W:	http://hamilton.catholic.edu.au
Enrolment:	1001
Year 11 to Year 12	
Region:	Central
Parish:	Hamilton



HISTORY

The Marist Brothers arrived in Newcastle in 1898 to take charge of the parish school in the basement of St Mary's Star of the Sea, Newcastle. However by the inter-war years it became clear that the site was insufficient. In 1928 the campus was moved to Hamilton. A monastery and school was established and so began its long expansion. It has been known as the St Francis Xavier's Boys School, Marist Brothers' High School and in 1985 became St Francis Xavier's College (SFX) when, as part of the restructuring of

Catholic Secondary education, the school became the Senior Secondary School for the Newcastle region.

The original school was a single storey building comprising nine classrooms and topped by a turret. A new two storey wing was added in 1932. In 1946 two additional storeys were added, the second doubling the number of classrooms and the third paid for by the P&F and becoming the school hall. In 1971 a Chapel was added. The quadrangle had become enclosed by buildings on all

four sides, the Monastery had a third storey added and many buildings had to be raised on pillars to conserve the playground and provide shade.

Extensive construction and refurbishment works continued in the 1970s, further expanding the school. The 1989 earthquake caused considerable disastrous damage to many of the College buildings. It took at least two years to restore some buildings and replace others that were completely damaged.



ARCHITECTURE

After decades of fundraising, SFX finally constructed a large multi-purpose hall on its relatively small suburban site in 2005. The facility sits well within the tight constraints of its urban context and is used for a broad range of school functions, improving the opportunity for music, dance and drama, indoor sport and HSC exams. A successful joint application for Trade Training Centre funding in 2010 provided Commonwealth funds to construct a purpose designed hospitality teaching facility and also to modify and refurbish woodwork and metalwork areas suitable for the delivery of trade certificate courses. A significant capital project has also been completed which provides improved accessibility throughout the school, including a lift, improved access amenities and level entry into most classrooms.



YEAR	DESCRIPTION	LOCAL CONTRIBUTION	GOVERNMENT GRANT	TYPE	PROJECT COST
2004	Construction of Multi-purpose Hall	\$2,393,072	\$0	Special	\$2,393,072
2009	Refurbishment of School Facilities - External & Internal, Upgrade of Electrical Reticulation, Procure Classroom Furniture	\$4	\$200,000	BER-NSP	\$200,004
2010	Special Learning Area	\$172,000	\$0	Special	\$172,000
2010	Trade Training Centre - Construction & Hospitality Centre with Commercial Kitchens	\$0	\$2,309,528	TTC	\$2,309,528
2013	Accessibility Upgrade including Walkway Replacement	\$1,900,000	\$0	Special	\$1,900,000 Budget



St Joseph's Primary School, Kilaben Bay

A:	140 Wangi Road KILABEN BAY 2283 PO Box 354 TORONTO 2283
P:	4959 1355
F:	4959 5150
E:	admin@kilabenbay.catholic.edu.au
W:	http://kilabenbay.catholic.edu.au
Enrolment:	337
Kindergarten to Year 6	
Region:	Lakes
Parish:	Toronto





HISTORY

Toronto became a Mass centre in 1915 as part of Wyong Parish. In 1926 Toronto joined the Parish of Boolaroo. 1950 saw the 'Brown' Sisters of St Joseph travelling from their convent in Boolaroo to establish a school in the church in Carey Street, Toronto. In 1956, after the parish of Toronto was established, a new brick school was built and staffed by the Sisters of Mercy. The 'black' Sisters of St Joseph of Lochinvar took over the school in 1973. A number of demountable classrooms were added in 1976 to cater for increased enrolments.

The school was moved in 1984 to its present site in Kilaben Bay for two main reasons: the original site which was an old quarry did not allow for expansion and the school was located on a busy main road making it difficult for teachers and children to access the school playground and church across the road. The new school, which is of log cabin construction, is set in bushland 10 kilometres south of the town. The new parish site comprises a church, presbytery, school and convent.



ARCHITECTURE

This undulating bushland site provided a challenge to the architects involved in designing the large BER funded multi-purpose hall. The imposing concrete structure sits into the side of the hill to provide a wide open undercroft for student use at one end, and direct access from the main entry level of the school. This awarded building is light and spacious and is an invaluable asset for this bushland school community.

YEAR	DESCRIPTION	LOCAL CONTRIBUTION	GOVERNMENT GRANT	TYPE	PROJECT COST
2009	Refurbishment of School Facilities - External & Internal, Construction of Shade Structure	\$4	\$150,000	BER-NSP	\$150,004
2009	Construction of Multi-purpose Hall & Refurbishment of Classroom & Associated Works	\$0	\$1,998,405	BER-P21	\$1,998,405



St James' Primary School, Kotara South

A:	Vista Parade KOTARA SOUTH 2289 Vista Parade KOTARA SOUTH 2289
P:	4952 2414
F:	4957 0597
E:	admin@kotarasouth.catholic.edu.au
W:	http://kotarasouth.catholic.edu.au
Enrolment:	246
Kindergarten to Year 6	
Region:	Central
Parish:	All Saints Blackbutt





HISTORY

St James' Primary School had its origins in Garden Suburb where it began on 31 January 1961. Two Sisters of Mercy from the New Lambton convent ran the school in a building which was originally the operating theatre from the Greta Migrant Camp. The rest of the hospital was transported to Garden Suburb to provide more classrooms and a temporary church.

In 1978 the transition to the present site began when the infants section of the school moved to a new 'open plan' style building on Vista Parade, opposite the church. This was fully funded by the parish of Kotara South. The old school was sold to make way for a private nursing home and demountable classrooms were purchased to allow the school to be fully located on one site. With the assistance of a building grant of \$222,500 from the Commonwealth Schools Commission and support from parishioners, a permanent school was fully operational on the Vista Parade site by 1981. The Sisters withdrew from the school in 1977.

ARCHITECTURE

St James' Primary School was in the middle of a major capital development when a further \$2million funding allocation was granted through the BER program. This additional windfall provided an opportunity to continue with the refurbishment of existing school facilities as well as construct a substantial multi-purpose hall with a curved brick facade and glazed doors opening onto the adjoining playground area.

YEAR	DESCRIPTION	LOCAL CONTRIBUTION	GOVERNMENT GRANT	TYPE	PROJECT COST
2007	Construction of Administration, staff, Classrooms & Walkways	\$839,600	\$645,031	ISOP	\$1,484,631
2009	Construct COLA, Refurbishment of School Facilities - External & Internal	\$0	\$125,000	BER-NSP	\$125,000
2009	Construction of Multi-Purpose Hall, Refurbishment of Library & Associated Works	\$0	\$2,280,177	BER-P21	\$2,280,177



Holy Spirit Primary School, Kurri Kurri

A:	Barton Street KURRI KURRI 2327 PO Box 223 KURRI KURRI 2327
P:	4937 2165
F:	4937 4192
E:	admin@kurri.catholic.edu.au
W:	http://kurri.catholic.edu.au
Enrolment:	106
Year 3 to Year 6	
Region:	All Saints
Parish:	Kurri Kurri



HISTORY

The township of Kurri Kurri was established in 1905. In 1908 Catholic schools were established by the Sisters of St Joseph at both Kurri and Abermain. For the first year, Sisters came from Cessnock by horse and buggy or coach to teach in the church/school. The first Sisters to teach at Kurri were Sisters Vincent, Sebastian and Benignus.

A new convent was blessed and opened on Sunday 9 May 1909 to house the Kurri Kurri and Abermain Sisters. In November 1928, the original church school at Kurri was burned to

the ground. On 24 March 1929, the foundation stone for a new church/school was laid and the building completed later in the year. This building continued to be used as a church/school until a new church was opened in 1963 when the building was converted fully to school use.

When the parish schools were rationalised in 1966, Kurri Kurri became the primary section of the school. In 1980, the old convent was resited and renovated to form an extra classroom, library and administration area.

The name of the school was changed in 1991 from St Joseph's to Holy Spirit Primary, bringing it in line with the parish name. The brick school building was renovated and extended in 1996 and in June 2006, two classrooms, withdrawal area, student toilets, new administration, staff facilities and groundsman store were officially opened to replace the old convent building which was beyond repair.



ARCHITECTURE

Holy Spirit Primary School is on a very compact site and having recently had a major capital development undertaken in 2006, was limited with building and development options with BER funding. The existing library and classrooms were refurbished and a new pupil amenities block was constructed providing a new canteen and toilets.



YEAR	DESCRIPTION	LOCAL CONTRIBUTION	GOVERNMENT GRANT	TYPE	PROJECT COST
2006	Construction of Classrooms, Administration & Amenities	\$285,739	\$587,196	GNE	\$872,935
2009	Refurbishment of School Facilities - External & Internal	\$0	\$75,000	BER-NSP	\$75,000
2009	Refurbishment of Library, Amenities , External Works & Associated Works	\$0	\$578,794	BER-P21	\$578,794
2012	Replacement of Covered Outdoor Learning Area & Associated Works	\$80,000	\$0	Special	\$80,000



St John's Primary School, Lambton

A:	Dickson Street LAMBTON 2299 PO Box 111 LAMBTON 2299
P:	4952 1423
F:	4952 1015
E:	admin@lambton.catholic.edu.au
W:	http://lambton.catholic.edu.au
Enrolment:	188
Kindergarten to Year 6	
Region:	Central
Parish:	Blackbutt North



HISTORY

A Catholic school has existed in Lambton since 1871. When the church/school was built in 1883 the Sisters of Mercy took over the school. It was the sixth foundation made by the Sisters of Mercy from Singleton and their first in Newcastle. The Lambton convent became a major centre for Mercy activity, from where the Sisters travelled to teach in Wallsend, New Lambton, Glendale and Lambton. In 1929 a new convent was built in Dickson Street and at its peak, housed up to eighteen Sisters who staffed these schools for 66 years.

For most of the period up to World War II classes were held in the old church/school

with some extensions and alterations. In 1950 a brick Kindergarten was built next to the convent and later four new classrooms were added adjoining the old school. The Kindergarten building later became a canteen, then the library, before becoming the parish centre in the 1990s. In the 1960s the old school was demolished and replaced by a two storey brick building. In 1995 the Sisters of Mercy moved from the Convent and the building was modified and extended for school use. The school has undergone many changes and extensions including the addition of a two storey classroom wing.

ARCHITECTURE

St John's Primary School received a major Capital grant in 2007 for the construction of a new classroom and library block and the full refurbishment of the existing administration, staff and remaining classrooms. A new toilet block was also constructed in 2008 which opened up the small grassed playground area to the main school courtyard for improved supervision. When the BER program arrived in 2009, it provided the opportunity to refurbish the school and parish hall and also to construct a new suspended upper storey classroom block with student play space below.



YEAR	DESCRIPTION	LOCAL CONTRIBUTION	GOVERNMENT GRANT	TYPE	PROJECT COST
2005	Construction of Library & Classrooms & Refurbishment of Classrooms	\$717,450	\$694,449	ISOP	\$1,411,899
2009	Refurbishment of School Facilities - External & Internal & Procure ICT Equipment & Infrastructure	\$1	\$125,000	BER-NSP	\$125,001
2009	Construction and Refurbishment of Classrooms & Refurbishment of Multi-Purpose Hall	\$395,871	\$584,749	BER-P21	\$980,620



All Saints College, St Joseph's Campus, Lochinvar

A: New England Highway LOCHINVAR 2321
New England Highway LOCHINVAR 2321

P: 4930 7291

F: 4930 7818

E: admin@lochinarsj.catholic.edu.au

W: <http://lochinarsj.catholic.edu.au>

Enrolment: 688

Years 7 to Year 10

Region: All Saints

Parish: Lochinvar





HISTORY

The Sisters of St Joseph, founded by Fr Julian Tenison Woods, arrived in Lochinvar on 3 September, 1883 to establish the new foundation of the Sisters of St Joseph, Lochinvar. They began teaching the following day. Thus began the story of the Lochinvar Josephites and their contribution to Catholic Education across the Maitland-Newcastle Diocese.

In 1915 St Joseph's School was registered as an Intermediate High School and in 1921 was fully registered under the Bursary Endowment Act. St Joseph's College at Lochinvar had a long tradition of providing secondary education for girls. For many years it was predominantly a boarding school but as the demographics of the local area changed, the boarding facilities were gradually phased out until their closure in 1992. Over the years there have been many extensions and renovations to accommodate

the growing needs of the area. During 1971-72 major extensions costing \$355,400 were financed by the Congregation of Sisters of St Joseph. There were also a \$61,623 Government Library grant and \$40,880 Science grant. These extensions included a primary section consisting of five classrooms and a small staffroom and library, built at a contract price of \$87,984. It was understood that, when the primary school was re-sited, these rooms would be used for the secondary school. In 1975, the Sisters agreed that the Secondary School would be systemic and the Catholic Education Office took over the management of current and capital funding.

In 1992 the three Catholic secondary schools in the Maitland area amalgamated to become All Saints College, a coeducational day school on three campuses. St Joseph's became a Junior Secondary High School.

ARCHITECTURE

The demographic growth in the Lochinvar area has led to a steady increase of enrolments for St Joseph's. Two recently successful Commonwealth grant applications have provided a much needed opportunity to replace the growing number of demountable classrooms in the school. Also successful with a trade training centre grant, the combined funds have provided a unique opportunity to undertake a substantial capital development on the site. There are two main buildings that were completed during 2013. One facility includes specialised construction workshops for agricultural studies, general woodwork and metalwork and the other building provides a new frontage and entry to the school, incorporating administration and staff, a new library and contemporary learning areas.

YEAR	DESCRIPTION	LOCAL CONTRIBUTION	GOVERNMENT GRANT	TYPE	PROJECT COST
2009	Refurbishment of School Facilities	\$0	\$67,000	BER-NSP	\$67,000
2009	Trade Training Centre - Agricultural Construction	\$2,646	\$675,000	TTC	\$677,646
2009 & 2010	Stage 1, Construction of Administration, Staff, Library & GPLA's. Stage 2, Construction of TAS Workshop & Classrooms.	\$5,114,389	\$5,012,012	GNE	\$10,126,401



St Patrick's Primary School, Lochinvar

A:	Gregory Road LOCHINVAR 2321 Gregory Road LOCHINVAR 2321
P:	4930 7270
F:	4930 7917
E:	admin@lochinvarep.catholic.edu.au
W:	http://lochinvarep.catholic.edu.au
Enrolment:	302
Kindergarten to Year 6	
Region:	All Saints
Parish:	Lochinvar



HISTORY

The original church/school in Lochinvar was destroyed by a storm in 1865 and a new church was erected in 1866. The church was also used as a Catholic school, staffed by lay people until State Aid was withdrawn from denominational schools at the end of 1882. Bishop Murray sought the help of the Sisters of St Joseph who took over the school in September 1883. The parishioners raised money to pay for a lay teacher, Miss Murray, until the Sisters commenced teaching.

After the arrival of the Sisters the location of the school changed several times. At one stage it was opposite the convent, down near the bridge over Lochinvar Creek. In 1900 a wooden school was erected in the convent ground. It was later resited and used by the secondary school for domestic science, until it was demolished in 1981. In 1905 Lochinvar became a parish and in 1911 Fr McCormack erected a brick primary school which is now the ground floor of the secondary school wing closest to the highway. The primary school remained in this building until 1966 when the secondary school was extended and the primary classes relocated to the back of the new wing. When the school was further extended in 1972, the primary school was again moved with the understanding that these classrooms would be vacated once a separate primary school was built.

With Monsignor V. F. Dilley as parish priest, construction of a new primary school began in August 1983 on parish land adjacent to the Church and although not quite completed, classes began on 6 February 1984. The school, which was of log cabin construction, was officially opened by Bishop Leo Clarke on St Patrick's Day, 1984 when the school also reverted to its original name of St Patrick's to distinguish it from the secondary school of St Joseph's and to emphasise its standing as a parish school.

ARCHITECTURE

The planned growth in the Lochinvar area provided the ideal opportunity to invest the BER funding on the construction of a new multi-purpose hall and classroom block. The new hall and adjacent parking area are well located for use after hours and the classroom block is designed to take advantage of correct solar orientation. The school was properly master planned prior to locating these new buildings, so that any further development of the school on the site will be sensibly located in line with this overall plan.





YEAR	DESCRIPTION	LOCAL CONTRIBUTION	GOVERNMENT GRANT	TYPE	PROJECT COST
2002	Construction of Canteen & Withdrawal Area & Convert Canteen to Extent Current Hall	\$100,000	\$0	Special	\$100,000
2009	Refurbishment of School Facilities - External & Internal & Upgrade of Electrical Reticulation	\$1	\$125,000	BER-NSP	\$125,001
2009	Construction of Multi-Purpose Hall & Classrooms	\$0	\$1,950,000	BER-P21	\$1,950,000



St John the Baptist Primary School, Maitland

A: 12 Victoria Street MAITLAND 2320
PO BOX 327 MAITLAND 2320

P: 4933 5613

F: 4934 3083

E: admin@maitlandsj.catholic.edu.au

W: <http://maitlandsj.catholic.edu.au>

Enrolment: 233

Kindergarten to Year 6

Region: All Saints

Parish: Maitland





HISTORY

The history of Catholic education in West Maitland, as it was originally known, dates back to the 1830s. St John's history on the current site began on 7 April, 1856 when the foundation stone was laid for the brick school in Victoria Street. It was a two storey building with boys on the lower floor and the girls on the upper level. The school was named St John the Baptist School and instruction was by lay teachers until the arrival of Sisters of the Good Samaritan in 1864. They withdrew from the school three years later and in the brief interval before the Dominican Sisters arrived in September 1867 the school was staffed by the Misses Healy. The school was primarily staffed by the Dominican Sisters from 1867 until 1996.

In 1874 St John's Primary School for Boys was built facing Cathedral Street and in 1884 two Patrician Brothers took charge of St John's Boys School. They left Maitland in 1888. The Headmaster for nine years to 1898 was a Mr H. A. O'Connor, who was succeeded by the Marist Brothers.

In 1970 the boys' primary school closed and St John's once again became a coeducational primary school from Kindergarten to Year 6. Over the years various extra land and buildings were acquired as well as demountable classrooms to house increased enrolments and changing school needs. In 1990 a recycled church became the school library.



ARCHITECTURE

St John the Baptist Primary School was certainly in need of a major refurbishment, and the 2009 BER program provided the opportunity to rebuild almost the entire school. Generous contributions from other schools in the diocese meant that the BER allocation provided for St John the Baptist was almost double its original entitlement. The significantly increased budget was able to deliver a new hall, library, staff and administration block as well as several new classrooms. Sensible master planning ensured that playground area was maximised and supervision across the site now unencumbered.

YEAR	DESCRIPTION	LOCAL CONTRIBUTION	GOVERNMENT GRANT	TYPE	PROJECT COST
2009	Refurbishment of Facilities - External & Internal	\$2	\$125,000	BER-NSP	\$125,002
2009	Construction of Library, Multipurpose Hall & Associated Works, Replacement of Administration & Classrooms	\$0	\$4,443,012	BER-P21	\$4,443,012



All Saints College, St Peter's Campus, Maitland

A:	9 Free Church Street MAITLAND 2320
P:	4933 6933
F:	4934 1167
E:	admin@maitlandsp.catholic.edu.au
W:	http://maitlandsp.catholic.edu.au
Enrolment:	867
Year 7 to Year 10	
Region:	All Saints
Parish:	Maitland





HISTORY

From 1838 Catholic students received their primary education at St John's Boys School in a cottage in Hunter Street Maitland. The school moved to Free Church Street in 1874. The Marist Brothers started teaching at this site in 1898. They travelled down from Sacred Heart College, Campbell's Hill in a four-wheeled buggy each day.

The St John's Boys School was registered as an Intermediate High School in 1915 and became fully registered in 1917. The first Leaving Certificate class was in 1919 and the following year the school became known as Marist Brothers High School, Maitland. The Marist Brothers also conducted a Boys Primary School on the site until 1970. Senior co-education was introduced in 1971 when

girls from St Mary's High School came to the school to complete Years 11 and 12. Two Dominican Sisters joined the staff at this time.

The Marist order withdrew from Maitland in 1984 bringing to an end 87 years of service to the Catholic education in the Maitland region. The school was staffed by lay teachers and was renamed St Peter's High School in 1985.

In 1992, the school was amalgamated with two other Catholic schools in Maitland, St Joseph's College run by the Sisters of St Joseph and St Mary's High School run by the Dominican Sisters to form All Saints College. St Peter's Campus became a co-educational school from Years 7 to 10.

ARCHITECTURE

St Peter's Campus is a very compact site with limited green space for active students. Two recent rounds of Commonwealth grants have afforded the opportunity to replace demountable classrooms with permanent purpose designed facilities. The first and second stages of works were completed during 2013. The first stage included a contemporary library and learning centre. The second stage included a new Technical and Applied Studies block with a trade training construction space, and extension and refurbishment of the administration block, a new music and performance facility and science laboratories updated to current Australian standards. The completion of these works has allowed the removal of many demountable buildings and increased the area of valuable green space for students to use.

YEAR	DESCRIPTION	LOCAL CONTRIBUTION	GOVERNMENT GRANT	TYPE	PROJECT COST
2008	Stage 1, Construction of Library & Refurbishment of Science Labs	\$1,941,176	\$3,200,000	GNE	\$5,141,176
2009	Trade Training Centre - Furnishing & Construction	\$0	\$675,000	TTC	\$675,000
2011	Stage 2, Construction & Refurbishment of Music, TAS, Administration, Staff & Classrooms	\$2,950,000	\$3,295,738	GNE	\$6,245,738 Budget



All Saints College, St Mary's Campus, Maitland

A:	16 Grant Street MAITLAND 2320
	16 Grant Street MAITLAND 2320
P:	4933 6177
F:	4934 2667
E:	admin@maitlandsm.catholic.edu.au
W:	http://maitlandsm.catholic.edu.au
Enrolment:	668
	Year 11 and Year 12
Region:	All Saints
Parish:	Maitland



HISTORY

The school began in 1867 under the auspices of the Sisters of St Dominic. In 1867, at the invitation of Bishop James Murray, eight Dominican Sisters completed an eighty day journey by sailing boat from Ireland to be the foundation members of St Mary's Convent Maitland. Their purpose was to take over St John's Primary School at Maitland which they did just five days after their arrival.

Fewer than five months later they opened St Mary's School for boarders and day pupils, which was one of the first secondary schools for girls in NSW outside the Sydney area and the first Dominican foundation in Australia. One of their aims was to educate young women who would have the financial backing and social standing to become the first of generations of Catholic teachers for the people of the Maitland Diocese. Within the next ten years the Sisters had purchased additional property and buildings to cater for the growing Dominican community and school. A purpose built convent and chapel were completed in 1872 and it is around these cloistered buildings that the present St Mary's grew.

To meet the requirements of the Wyndham scheme Our Lady of Mercy Home Science School at Campbell's Hill amalgamated with St Mary's in 1963. A further change occurred in 1971 when the girls in the senior classes attended classes at Marist Brothers High School and two Dominican Sisters joined the staff of this school.

In 1992 the three Catholic secondary schools in the Maitland area amalgamated to become All Saints College, a co-educational day school on three campuses. St Mary's High School became the Senior Campus for this College.

ARCHITECTURE

St Mary's senior campus has seen some significant redevelopment over the last decade. Several demountable classrooms were replaced with new buildings as a result of a Commonwealth grant in 2005. The funding provided for a new Technical and Applied Studies (TAS) block, science laboratories, art room and general classrooms as well as pupil amenities and a series of linking walkways between the buildings. The heritage listed buildings on the site constrained the design of the new facilities to ensure they complement the existing buildings. More recent capital development on the site has included a lift to link the upper levels of the main building and in 2011 some further Commonwealth funding through the Trade Training Centre program to construct a new hospitality teaching facility completed in 2013.



YEAR	DESCRIPTION	LOCAL CONTRIBUTION	GOVERNMENT GRANT	TYPE	PROJECT COST
2003	Construction of TAS, Classrooms, Science & Student Amenities	\$1,341,359	\$2,371,468	GNE	\$3,712,827
2007	Installation of Lift	\$246,912	\$110,000	Special Needs	\$356,912
2009	Refurbishment of School Facilities & COLA - External & Internal	\$3,438	\$200,000	BER-NSP	\$203,438
2009	Trade Training Centre - Hospitality & Electro	\$341,745	\$2,931,400	TTC	\$3,273,145 Budget



San Clemente High School, Mayfield

A: Havelock Street MAYFIELD 2304
PO Box 405 MAYFIELD 2304

P: 4014 7300

F: 4960 2782

E: admin@mayfieldsanc.catholic.edu.au

W: <http://mayfieldsanc.catholic.edu.au>

Enrolment: 709

Year 7 to Year 10

Region: North

Parish: Mayfield





HISTORY

San Clemente was founded as a boarding and day school for girls by the Dominican Sisters in 1916. The school was moved to its present site in 1919. The last four Dominican Sisters departed in 1976 when San Clemente High School became the first diocesan Catholic high school to be staffed by lay people. Another milestone occurred in 1983 when boys were enrolled for the first time. The school is named after San Clemente, a basilica in Rome, the name reflecting the Spanish origins of the Dominicans.

San Clemente also caters for students who graduate from St Dominic's Centre for Hearing Impaired Children and for this purpose formed a unit for integration of hearing impaired students into general classes in 1980.

ARCHITECTURE

San Clemente was the recipient of two separate stages of Commonwealth grant funding in 2006 and 2008 respectively. It was a growing school with several demountable classrooms and ageing buildings and was in desperate need of substantial redevelopment. The two stages of capital funding were invaluable in delivering a complete transformation of the school's built environment. The new purpose designed facilities reflect a visual reference to the main heritage listed building on the site and include a new library, art rooms, general classrooms and music precinct. The heritage building was also expertly refurbished in keeping with the original architecture of the era and some further Trade Training Centre funding in 2011 provided a purpose designed hospitality space within another of the original buildings.



YEAR	DESCRIPTION	LOCAL CONTRIBUTION	GOVERNMENT GRANT	TYPE	PROJECT COST
2005	Construction of Classrooms	\$899,090	\$1,546,406	ISOP	\$2,445,496
2007	Refurbishment of Administration, Staff & Classrooms	\$825,775	\$735,156	ISOP	\$1,560,931
2009	Refurbishment of School Facilities - External & Construction of Security Fence	\$1	\$200,000	BER-NSP	\$200,001
2009	Trade Training Centre - Hospitality Commercial Kitchen	\$0	\$376,054	TTC	\$376,054



St Dominic's Centre for Hearing Impaired Children, Mayfield

A:	76 Havelock Street MAYFIELD 2304 PO Box 269 MAYFIELD 2304
P:	4968 1295
F:	4968 0456
E:	admin@mayfieldsd.catholic.edu.au
W:	http://mayfieldsd.catholic.edu.au
Enrolment:	26
Transition/Kindergarten to Year 6	
Region:	North
Parish:	Mayfield



HISTORY

St Dominic's has a history built on the traditions of the Centre's founders, the Dominican Sisters. The Sisters began the first Catholic school for students who were deaf and hearing impaired at their convent in Newcastle in 1875. As the need for this service grew the Institute for the Deaf and Dumb was opened at Waratah in 1888 to provide board and education for girls and boys from across New South Wales. In 1922 the boys transferred to the new Christian Brothers School at Castle Hill. The Sisters continued this apostolate in the Waratah buildings until the Newcastle earthquake forced their transfer to demountable buildings in 1990. In the latter years the school name changed to the Catholic Centre for Hearing Impaired.

In 1993 the school relocated to its present site and was renamed St Dominic's after the pioneering Sisters who began this work in the diocese. The purpose-built centre is designed to reduce the amount of ambient noise entering the building providing an environment which has excellent listening conditions and is advantageous for children who are using amplified residual hearing or cochlear implants to develop listening and speech.

St Dominic's is a Catholic special school which caters for children who have a significant hearing impairment and a consequent delay in language development. Some students have a disability in addition to hearing and language needs. All students have individualised educational programs that promote the development of communication skills, spoken language, academic skills and positive social outcomes.

Students who graduate are able to progress to San Clemente High School, where a unit was formed in 1980 for the integration of hearing impaired students into general classes.

ARCHITECTURE

St Dominic's, one of the smallest schools in the diocese, was generous in sharing most of its BER allocation with the broader diocesan school community. Its funds were well invested in providing a more engaging library area in the school with interesting and more tactile furniture and fittings.



YEAR	DESCRIPTION	LOCAL CONTRIBUTION	GOVERNMENT GRANT	TYPE	PROJECT COST
2009	Refurbishment of Library, School Facilities External & Internal, Procure Specialised ICT Infrastructure Support	\$0	\$50,000	BER-P21	\$50,000
2012	Accessibility & Special Needs Upgrade	\$55,000	\$280,000	BGAS	\$335,000



St Columban's Primary School, Mayfield

A:	Church Street MAYFIELD 2304 PO Box 230 MAYFIELD 2304
P:	4968 3315
F:	4967 7653
E:	admin@mayfieldsc.catholic.edu.au
W:	http://mayfieldsc.catholic.edu.au
Enrolment:	160
Kindergarten to Year 6	
Region:	North
Parish:	Mayfield



HISTORY

In July 1917 a new parochial district was formed at Waratah, embracing the areas of Waratah, Broadmeadow and Mayfield. A new school was established in Kerr Street, Mayfield in October 1917 by the Dominican Sisters from St Mary's Convent, West Maitland. In 1919 the Sisters purchased a larger property called "Redcliff" and renamed it San Clemente after a Dominican Church in Rome. The primary section of the school remained on the San Clemente site until 1922 when it was moved to its present site in Church Street.

When St Columban's was built in Church Street it was just a few classrooms and sheds. It was used as a church/school known as St Joseph's and was used as a church until 1940 when the present church was opened. The school changed its name to St Columban's in 1924. In the 1950s major construction works were carried out – the old classrooms were renovated and new sections built to cater for the increased enrolments due to the post war immigration scheme. Over the years there were many additions and facilities were upgraded.





ARCHITECTURE

The BER funding arrived at the ideal time to refurbish and extend St Columban's. The school already had access to a large parish hall and so the grant funding was focused on the construction of a new contemporary library and the refurbishment and relocation of the administration and staff spaces to the front area of the school. All the classrooms were refurbished, and the central courtyard of the school resurfaced and landscaped to improve its appearance significantly. The entry to the school was also updated and a new ramp and stairs provide much greater accessibility. New glazed doors and signage also make the front entry point to the school much more inviting.

YEAR	DESCRIPTION	LOCAL CONTRIBUTION	GOVERNMENT GRANT	TYPE	PROJECT COST
2009	Refurbishment of School Facilities - External & Internal	\$0	\$125,000	BER-NSP	\$125,000
2009	Refurbishment of Administration & Construction of Library	\$580	\$1,500,000	BER-P21	\$1,500,580



St Joseph's Primary School, Merewether

A: Farquhar Street MEREWETHER 2291
PO Box 183 THE JUNCTION 2291

P: 4961 2827

F: 4940 8499

E: admin@merewether.catholic.edu.au

W: <http://merewether.catholic.edu.au>

Enrolment: 359

Kindergarten to Year 6

Region: Central

Parish: Newcastle





HISTORY

A church/school opened on the corner of Kendrick and Farquhar Streets Burwood (later Merewether) in August 1876 as a Mass station for St Mary's Newcastle. Before the Sisters of St Joseph arrived in January 1888 a school had been conducted in the church by lay teachers and from 1882 to 1884 by the Sisters of Mercy, Hamilton. The Sisters of St Joseph moved to a cottage which was rented and later purchased by the parish in Union Street.

In 1909 a timber primary school was built with frontage to Farquhar Street. Extra timber buildings were added as the school grew. A high school was established on the site in 1932. In 1936 a two storey brick school was constructed on the corner of Kendrick and Union Streets. The high school occupied the first floor and four primary classes were located downstairs. In 1947 a large Kindergarten building was opened.

As the high school enrolments increased it was necessary to find new accommodation for the primary classes using the 1936 building. In 1956 the first stage of the current school facing Farquhar Street was opened. During the 1960s the 1909 building was demolished and the 1956 building extended to provide modern classrooms. Over the years the parish progressively purchased properties in Union and Farquhar Streets to provide for the growth of both the primary and secondary schools.

Prior to its closure in 1984, several wings had been added to St Joseph's High School along Union Street. While some of the vacated buildings were used as 'The Saint Thomas More Centre', the curriculum unit for the Catholic Education Office, one wing was converted to become the administration area, library and staff facilities for the primary school. All the high school buildings are now fully utilised by St Joseph's Primary School.

ARCHITECTURE

The school undertook a major refurbishment of its administration and staff areas in 2007 and the library was relocated and refurbished on the ground floor to improve the overall accessibility of these facilities. The BER funding completed the revitalisation of the school by refurbishing classrooms, canteen and the school and parish hall. After some discussion amongst the school and parish community, the balance of the funding was allocated to refurbish completely the heritage listed 'Thomas More Building' being a previously retired and unoccupied high school building on the site.

YEAR	DESCRIPTION	LOCAL CONTRIBUTION	GOVERNMENT GRANT	TYPE	PROJECT COST
2006	Refurbishment of Administration, Staff & Library	\$300,511	\$0	Special	\$300,511
2009	Refurbishment of School Facilities - External & Internal	\$0	\$150,000	BER-NSP	\$150,000
2009	Refurbishment of Classrooms, Multi-purpose Hall & Associated Works	\$0	\$1,796,833	BER-P21	\$1,796,833



Holy Family Primary School, Merewether Beach

A: 19 Janet Street MEREWETHER BEACH 2291
PO Box 153 MEREWETHER 2291

P: 4963 3009

F: 4963 4065

E: admin@merewetherbeach.catholic.edu.au

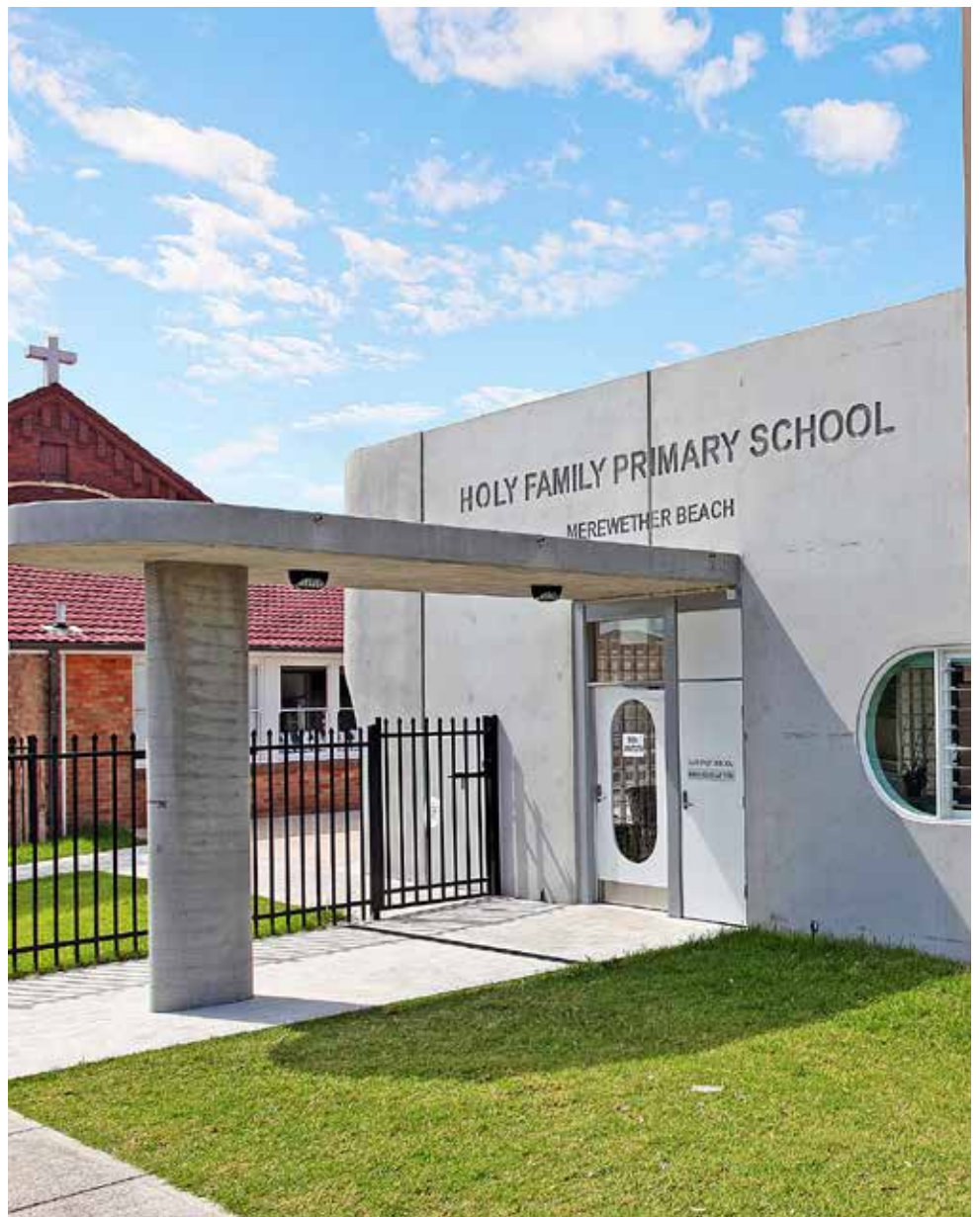
W: <http://merewetherbeach.catholic.edu.au>

Enrolment: 235

Kindergarten to Year 6

Region: Central

Parish: Newcastle



HISTORY

Merewether Beach Parish, initially called Merewether South, was established in February 1939 and Mass celebrated in a cottage. Within three months the cottage was demolished and regular Masses were held in a new church/hall which was blessed on 3 June 1939. A new brick church of The Holy Family was opened in 1952. The former church/hall was converted for school use and Holy Family Primary School opened in February 1956 when the students from Merewether Beach parish transferred from St Joseph's Merewether to their new school. The Sisters of St Joseph who staffed the school travelled each day by taxi from the Merewether Convent until a new convent was opened in Janet Street in June 1961.

In December 1961 a new school consisting of four classrooms was opened by Bishop Toohey. Later another wing was added to the school. When the Sisters withdrew from the Convent in 1997 the building was converted for use by the school and parish. Holy Family Church was closed as a Mass centre on 30 June 2007.



ARCHITECTURE

Holy Family Primary School was a school in need of major redevelopment prior to the announcement of the BER program in 2009. A significant allocation of BER funds from other schools in the diocese enabled the school to undertake a major redevelopment of its facilities, including new buildings and refurbishment of multi-purpose hall and classrooms. A new two storey concrete framed administration, staff and classroom block with curved walls and round coloured windows is a playful yet cost effective solution in this highly corrosive coastal location. The installation of louvre windows to catch the constant summer sea breeze keeps the building relatively cool in summer and the low winter sun heats the concrete and masonry walls to keep the classrooms warm in winter.



YEAR	DESCRIPTION	LOCAL CONTRIBUTION	GOVERNMENT GRANT	TYPE	PROJECT COST
2009	Refurbishment of School Facilities - External & Internal	\$0	\$125,000	BER-NSP	\$125,000
2009	Construction of Library, Administration & Classrooms, Refurbishment of Multi-Purpose Hall & Classrooms	\$0	\$3,248,811	BER-P21	\$3,248,811



St Joseph's Primary School, Merriwa

A: Marquet Street MERRIWA 2329
Marquet Street MERRIWA 2329

P: 6548 2035

F: 6548 2782

E: admin@merriwa.catholic.edu.au

W: <http://merriwa.catholic.edu.au>

Enrolment: 65

Kindergarten to Year 6

Region: Upper Hunter

Parish: Merriwa





HISTORY

Although there was a Catholic presence very early in Merriwa, it was not until 1874 that a parish was established. St Joseph's Catholic School was founded in 1883 when the Catholic people of the district agreed to contribute £10 per month to employ a teacher. By March of 1884 the number of students had increased, requiring a second teacher.

Four Sisters of St Joseph from Lochinvar arrived in Merriwa in 1885 to establish St Joseph's Primary School. The original convent, a small wooden building, was replaced in 1918 with a traditional colonial style sandstone building which still forms part of the parish complex.

A new school opened in November 1928 in Marquet Street. An infants classroom in honour of the Holy Family was blessed on 31 January 1954. On 19 January 1961, an additional block of two new classrooms was opened. This building housed the high school classes which operated at St Joseph's Merriwa from 1954 to 1968. A multi-purpose building was opened in the late 1980s to house the canteen, covered shelter storage areas and toilets.

ARCHITECTURE

This small country school was dramatically redesigned and extended in 2007 with assistance from a Capital grant. The existing administration block was extended, and a new entry and reception area provided an obvious new front door to the school. Reorientation of existing classrooms and construction of another provided a new courtyard area with good supervision and wide verandahs. BER funding completed the school's facilities by further refurbishing pupil amenities and providing additional covered walkways to link all buildings together.

YEAR	DESCRIPTION	LOCAL CONTRIBUTION	GOVERNMENT GRANT	TYPE	PROJECT COST
2006	Refurbishment & Extension of Administration, Staff & Library	\$325,000	\$440,672	GNE	\$765,672
2009	Refurbishment of School Facilities & COLA - External	\$1	\$50,000	BER-NSP	\$50,001
2009	Construction of Covered Outdoor Learning Area & Refurbishment of Student Amenities	\$0	\$250,000	BER-P21	\$250,000



St John Vianney Primary School, Morisset

A:	60-66 Yambo Street MORISSET 2264 PO Box 297 MORISSET 2264
P:	4973 4073
F:	4973 4475
E:	admin@morisset.catholic.edu.au
W:	http://morisset.catholic.edu.au
Enrolment:	139
Kindergarten to Year 6	
Region:	Lakes
Parish:	Morisset



HISTORY

In November 1861 a tiny Cooranbong church which was also Lake Macquarie's first school was officially opened. In 1880 three Sisters of St Joseph arrived from Queensland to set up the Convent school and numbers quickly swelled to more than eighty students. The Convent School remained open for 16 years. Mother Mary MacKillop visited the school twice to offer support for the struggling community. The school is very proud of its connection with the Sisters of St Joseph and particularly with

our first Australian saint, St Mary of the Cross MacKillop.

St John Vianney School opened on 17 January 1962 with sixty pupils. The school was the dream of Fr Dominic O'Gorman O.H.(St John of God Priest) who, by his dedication and earnest efforts, raised the funds to have the school ready for the Sisters of St Joseph from Lochinvar who administered it as a parochial school under the guidance of the Archdiocese of Sydney.

With the change of diocesan boundaries in 1966 the parish became part of the Diocese of Maitland.

In 1964 a small hall with canteen underneath was built and this was used for both parish and school use. This building was later extended and used as a school library. As the school grew a demountable room was added and in 1991 the parish undertook major work by building two new brick classrooms, canteen and toilet block.



ARCHITECTURE

A small capital project was undertaken in 2008 to provide a proper administration area for the school which had operated for many years from a demountable building. The BER funding then provided the funds to construct a new library, classroom and multi-purpose area as well as a large COLA. Landscaping and paving works also improved accessibility to the facilities on this sloping site.



YEAR	DESCRIPTION	LOCAL CONTRIBUTION	GOVERNMENT GRANT	TYPE	PROJECT COST
2008	Refurbishment Administration, Staff & Library	\$385,316	\$0	Special	\$385,316
2009	Refurbishment of School Facilities - External & Internal & Classroom Joinery Works	\$2	\$75,000	BER-NSP	\$75,002
2009	Construction of Library, Multi-Purpose Hall & Associated Works & Refurbishment of Classrooms	\$0	\$1,800,050	BER-P21	\$1,800,050



St James' Primary School, Muswellbrook

A: Skellatar Stock Route MUSWELLBROOK 2333
PO Box 606 MUSWELLBROOK 2333

P: 6543 3094

F: 6543 2297

E: admin@muswellbrook.catholic.edu.au

W: <http://muswellbrook.catholic.edu.au>

Enrolment: 297

Kindergarten to Year 6

Region: Upper Hunter

Parish: Muswellbrook



HISTORY

The school began as a Catholic denominational school in the middle of a developing township in 1862. When government funding was withdrawn at the end of 1882 Fr Rogers invited the Sisters of Mercy to take responsibility for the school. In 1885, a new school was built 'on the hill' behind the Church in Sowerby Street, Muswellbrook and when a second storey was added in 1914, it formed the nucleus of the school complex which provided a valuable Catholic education to the children of the area till the 1980s. Another valuable addition was the

CUSA rooms built for soldiers during World War II and later used as classrooms and a canteen for the growing school. The Sisters of Mercy continued their mission in St James' School until 1972. The Sisters of St Joseph continued to provide Catholic education from 1973 until 1991 when the first lay principal was appointed.

From 1973 to 1975 the infants classes moved to Skellatar House, a large property purchased by the parish in 1953. This house had been used for St Mary's High School from 1953 to 1968.

The demand for places in the school brought on by an expansion in mining and power industries, resulted in the need for a larger school with modern facilities. In 1983, 100 years after the arrival of the Sisters of Mercy, the present primary school of 14 classrooms, a chapel, hall and other amenities was opened at Skellatar Stock Route on a section of the original Skellatar Homestead property. The school which was estimated to cost \$1,800,000 was financed by the selling of blocks of land in two subdivisions of church land in South Muswellbrook.



ARCHITECTURE

There had been no significant capital works at St James' Primary School since it was relocated to its current location in the early 1980s. The BER grant provided a timely opportunity to complete the school by the construction of a multi-purpose hall. The broader school community was keen to utilise the funding to its potential, and decided to allocate a majority of the funding to a large and well equipped gathering space and also to refurbish the school's library. The 600 seat hall has a commercial kitchen area, plenty of toilets and a high ceiling with good natural light and a pleasant outlook over the school's playing fields.

YEAR	DESCRIPTION	LOCAL CONTRIBUTION	GOVERNMENT GRANT	TYPE	PROJECT COST
2009	Construction of Security Fence, Resurface Driveway & Refurbishment of School Facilities - External	\$0	\$149,956	BER-NSP	\$149,956
2009	Construction of Multi-Purpose Hall & Refurbishment of Library	\$151,962	\$2,503,167	BER-P21	\$2,655,129



St Michael's Primary School, Nelson Bay

A:	Sproule Street NELSON BAY 2315 Sproule Street NELSON BAY 2315
P:	4981 1111
F:	4981 2440
E:	admin@nelsonbay.catholic.edu.au
W:	http://nelsonbay.catholic.edu.au
Enrolment:	280
Kindergarten to Year 6	
Region:	North
Parish:	Nelson Bay



HISTORY

Prior to the opening of the school at Nelson Bay, the Sisters of Mercy travelled from Stockton Convent twice monthly to help instruct the large numbers of children of Catholic parents, many of whom were among the 'New Australians' who were living at the former military camp nearby.

St Michael's School opened in January 1962 when the church/hall in Magnus Street was enlarged and renovated providing three classrooms for use as a school during the week. At the same time, the parish purchased a house to serve as a Convent for the Sisters of Mercy who were to staff the school. In September 1969 a new school in Wahgunyah Road was opened. This school was extended in 1984 and in 1991 a modern school library was opened and named 'Lopes Library' in honour of the benefactor, Mary Lopes, a parishioner who donated over \$100,000 for the works.

ARCHITECTURE

St Michael's Primary School managed a growing student population with demountable classrooms over several years, until the BER funding was announced in 2009. It presented the perfect opportunity to replace the demountables with new classrooms and also refurbish existing classroom spaces. Provision for a future lift was included in the master plan and the allocation also provided enough money to build a large naturally lit multi-purpose hall space with kitchen area, amenities and level entry from the adjacent street frontage.





YEAR	DESCRIPTION	LOCAL CONTRIBUTION	GOVERNMENT GRANT	TYPE	PROJECT COST
2009	Refurbishment of School Facilities - External & Internal & COLA	\$1	\$125,000	BER-NSP	\$125,001
2009	Construction of Multi-Purpose Hall & Classrooms	\$62,522	\$3,000,000	BER-P21	\$3,062,522



St Therese's Primary School, New Lambton

A: Burke Street NEW LAMBTON 2305
PO Box 321 NEW LAMBTON 2305

P: 4957 4922

F: 4952 1637

E: admin@newlambton.catholic.edu.au

W: <http://newlambton.catholic.edu.au>

Enrolment: 590

Kindergarten to Year 6

Region: Central

Parish: Blackbutt North





HISTORY

St Therese's Primary School was established by the Sisters of Mercy in 1926 when the church/school at New Lambton was opened. Initially the Sisters travelled from Hamilton Convent to teach each day. From 1940 the Sisters lived at Lambton Convent until July 1955 when a Convent was prepared for them in Royal Street New Lambton.

The old church/school was used for classes until 1954 when the parish of New Lambton and Kotara was established with Fr Vincent Casey as Parish Priest. Under his leadership the parish embarked on a series of major projects. In September 1954 a new timber school consisting of three classrooms with wide verandahs was opened. By July 1955 a further three classrooms were added. Kindergarten was held in a converted cottage on site. The new Church of St Therese was opened in 1956 on the corner of Royal and Victoria Streets thus freeing the original church to be used as a hall for both school and parish. The timber school was extended as the need for accommodation arose. In 1959 extra land facing William Street was purchased to provide extra playground space. The school was the first primary school in the diocese to have a school library which was opened in 1966.

An administration building including staff facilities was built facing Burke Street in 1994 and later extended to include a new library in 2004.



ARCHITECTURE

St Therese's is the largest Catholic primary school in the Newcastle area and is land locked in a leafy residential suburb. Demountable classrooms had been slowly increasing on this compact school site as enrolments grew over several years. Significant funding through the BER program, including additional funds provided by other diocesan schools, allowed the project brief to expand. The works included a large school community hall space, twelve new classrooms in two double storey blocks and the refurbishment of other classrooms and amenities.

YEAR	DESCRIPTION	LOCAL CONTRIBUTION	GOVERNMENT GRANT	TYPE	PROJECT COST
2009	Refurbishment of School Facilities - Internal & Construction of COLA	\$1	\$200,000	BER-NSP	\$200,001
2009	Construction of Classrooms & Multi-Purpose Hall	\$931	\$4,500,000	BER-P21	\$4,500,931



St Brigid's Primary School, Raymond Terrace

A:	52 Irawang Street RAYMOND TERRACE 2324 PO Box 77 RAYMOND TERRACE 2324
P:	4987 2625
F:	4987 6088
E:	admin@raymondterrace.catholic.edu.au
W:	http://raymondterrace.catholic.edu.au
Enrolment:	424
Kindergarten to Year 6	
Region:	North
Parish:	Raymond Terrace

HISTORY

Raymond Terrace was gazetted in 1837 and became an important shipping centre on the Hunter River in the 1840s. The parish of Raymond Terrace is one of the oldest in the diocese having been established in 1853. The historic church of St Brigid was built in 1862 with subsequent renovation in 1981. It was built from local sandstone in simplified gothic style comprising a nave with a high gable in place of a tower.

As early as 1866 records show that there were Catholic schools in Raymond Terrace and at Millers Forest across the river. The Singleton Congregation of the Sisters of Mercy arrived in Raymond Terrace in May 1881 to begin their work in both parish schools and remained for 100 years serving the parish. The first Catholic school was built in 1880 at Raymond Terrace. In 1912 a two storey colonial style convent was built next to the church. In 1920 the school/ church hall was built in simple brick with ornate entrance facade. This building was across the road from the church and extensions were made to it in the 1950s. All the buildings are heritage listed for the area. The 1880 stone school was demolished in 1959 to make way



for a new school building on the original school site. The foundation stone for this building which was opened in 1960 is preserved in the school library. As the school enrolment grew, demountable classrooms were erected adjacent to the 1920 school/hall. In September 1995 the convent was converted into the administration building and the old administration area made into a much larger library.

St Patrick's School at Millers Forest which was designed by Frederick Menkens in 1887 did not reopen after the devastating floods of 1955 and the remaining 30 or so pupils transferred to St Brigid's Raymond Terrace.

ARCHITECTURE

St Brigid's was at the back end of a major capital development in 2009 when the BER program was announced. This additional funding provided the perfect opportunity to complement the recently completed new classroom block with the construction of a large school community hall space as well as the refurbishment of the existing library and classrooms.





YEAR	DESCRIPTION	LOCAL CONTRIBUTION	GOVERNMENT GRANT	TYPE	PROJECT COST
2007	Construction of Classrooms, Staff & Refurbishment of Library	\$695,318	\$841,376	ISOP	\$1,536,694
2009	Refurbishment of School Facilities - External & Internal & Construction of COLA	\$2	\$200,000	BER-NSP	\$200,002
2009	Construction of Multi-Purpose Hall & Refurbishment of Classrooms	\$0	\$2,913,793	BER-P21	\$2,913,793



St Paul's Primary School, Rutherford

A:	90A Gillies Street RUTHERFORD 2320 90A Gillies Street RUTHERFORD 2320
P:	4932 8605
F:	4932 5105
E:	admin@rutherford.catholic.edu.au
W:	http://rutherford.catholic.edu.au
Enrolment:	467
Kindergarten to Year 6	
Region:	All Saints
Parish:	Rutherford



HISTORY

As a result of the devastating 1955 Maitland floods, many people in the Maitland district sought safer housing in higher land around the Rutherford district.

On 29 January 1957 a new infants school commenced in a cottage on the St Paul's site under the direction of the Sisters of Mercy at Campbell's Hill where Sisters taught in the Sacred Heart School. The cottage became too small to accommodate the growing

number of students and on 1 October 1961 a new building was opened for children from Kindergarten to Year 6. At a meeting in October 1965 it was decided to combine the Rutherford and Campbell's Hill areas making the Sacred Heart School at Campbell's Hill an infants school and St Paul's School at Rutherford a primary school. This arrangement remained in place until 1981 when a new infants block was opened at Rutherford. Sacred Heart School at

Campbell's Hill closed after the Easter break in 1981 and the students moved to St Paul's.

(The closure of the Sacred Heart School brought to a close over 100 years of Catholic education on the Monte Pio site).

St Paul's has undergone many alterations and changes over the years to accommodate its growing needs.



ARCHITECTURE

St Paul's underwent a major redevelopment in 2008 with a significant Commonwealth grant and contribution from the Diocesan Family Schools Building Levy. BER funding allowed this growing school to complete the construction of a new library and classrooms and refurbish remaining classrooms to a contemporary level.



YEAR	DESCRIPTION	LOCAL CONTRIBUTION	GOVERNMENT GRANT	TYPE	PROJECT COST
2004	Construction & Refurbishment of Classrooms, Administration, Staff & Library	\$743,851	\$926,444	ISOP	\$1,670,295
2009	Construct COLA, Refurbishment of School Facilities, Procure ICT Equipment & Infrastructure	\$0	\$149,929	BER-NSP	\$149,929
2009	Construction of Classrooms & Library & Associated Works	\$0	\$1,963,708	BER-P21	\$1,963,708



St Mary's Primary School, Scone

A:	12 Short Street SCONE 2337 PO Box 235 SCONE 2337
P:	6545 2058
F:	6545 3401
E:	admin@scone.catholic.edu.au
W:	http://scone.catholic.edu.au
Enrolment:	190
Kindergarten to Year 6	
Region:	Upper Hunter
Parish:	Scone



HISTORY

St Mary's School and Convent were founded on the corner of Kingdon and Hill Streets, Scone. Three Sisters of Mercy from Singleton established the school in 1887. In 1953 the parish built a new school on the corner of Waverley and Short Street, Scone in close proximity to the parish church. The Sisters of Mercy had charge of the school up until 1982 when the first lay principal was appointed; the last Sister was Sr Fidelis who retired at the end of 1993.

In 1986 St Mary's Scone received a capital grant of \$265,900 from the Commonwealth

Government towards a redevelopment project to provide two new classrooms, storage space, new student toilets, a canteen and shelter area costing \$315,900. By the late 1990s the school had fallen into disrepair and had gone through rapid growth with six demountable classrooms being used to cope with this demand. In 2000 another capital grant from the Commonwealth Government was received and contributed to the building of five new classrooms and refurbished the building built in 1952, creating a new library, offices and staffrooms.

ARCHITECTURE

St Mary's has had no significant building development since the construction of the new administration and library block around 2000. The recent BER windfall provided the perfect opportunity for the school to construct a multi-purpose hall and additional classroom block to replace an existing demountable. The new facilities have now completed the school in terms of their overall space needs, and the new hall in particular provides an opportunity for meaningful school and community functions.



YEAR	DESCRIPTION	LOCAL CONTRIBUTION	GOVERNMENT GRANT	TYPE	PROJECT COST
1998	Construction of Classrooms & Refurbishment - new Library, Offices & Staff Amenities	\$267,257	\$572,620	GNE	\$839,877
2009	Refurbishment of School Facilities - External & Internal & Construction of COLA	\$2	\$125,000	BER-NSP	\$125,002
2009	Construction of Multi-Purpose Hall & Classrooms & Associated Works	\$0	\$2,000,127	BER-P21	\$2,000,127



Our Lady of Victories Primary School, Shortland

A:	15 Lovell Parade SHORTLAND 2307
	15 Lovell Parade SHORTLAND 2307
P:	4951 1003
F:	4955 8730
E:	admin@shortland.catholic.edu.au
W:	http://shortland.catholic.edu.au
Enrolment:	139
	Kindergarten to Year 6
Region:	North
Parish:	Wallsend-Shortland

HISTORY

The Parish of Shortland was formed in 1949 and quickly became a major centre with a large Catholic population. Our Lady of Victories Primary School was established by Fr Roland Smythe and three Sisters of St Joseph. The church/school and a convent were opened on 2 December 1956 and the presbytery was opened in July 1957. The school, originally named St Joseph's commenced with an enrolment of 74 children from Kindergarten to Fourth Class. Within six months of the school operating it became evident that it would need to be expanded because of the rapid housing development taking place in Shortland. Plans were made to expand the school into a three classroom school and the new school opened after the Easter break in 1958. Our Lady of Victories Church on Sandgate Road was opened in 1964 thus allowing the old church to be used for school purposes. At one time the presbytery garage was converted to make an extra classroom.





ARCHITECTURE

Our Lady of Victories was the recipient of a significant Commonwealth grant in 2006 which allowed the previously unsuitable facilities to be more or less completely replaced. The project delivered almost an entirely new school onto the existing site, leaving some original buildings still in use. The BER funding allocated to Our Lady of Victories was used to construct a much needed multi-purpose hall space and also to refurbish some of the original remaining classrooms.

YEAR	DESCRIPTION	LOCAL CONTRIBUTION	GOVERNMENT GRANT	TYPE	PROJECT COST
2004	Construction & Refurbishment of Classrooms, Administration, Staff, Library, Toilets & Canteen	\$666,988	\$740,912	GNE	\$1,407,900
2009	Refurbishment of School Facilities - External & Internal & Procure ICT Equipment & Infrastructure	\$0	\$75,000	BER-NSP	\$75,000
2009	Construction of Multi-Purpose Hall & Refurbishment of Classrooms	\$4,884	\$1,050,000	BER-P21	\$1,054,884



St Catherine's Catholic College, Singleton

A:	30-40 Combo Lane SINGLETON 2330 30-40 Combo Lane SINGLETON 2330
P:	6578 9600
F:	6578 9699
E:	admin@singleton.catholic.edu.au
W:	http://singleton.catholic.edu.au
Enrolment:	866
Kindergarten to Year 12	
Region:	Upper Hunter
Parish:	Singleton



HISTORY

St Catherine's Catholic College, Singleton was established in 2001 when three school entities, St Catherine's College, St Francis Xavier's Primary School and the Catholic Junior School combined to form the new Kindergarten to Year 12 College. The school enrolment includes students from Singleton township and outlying areas.

Catholic education in Singleton has a long history dating back to as early as 1843. A substantial stone and brick school building was constructed in 1868 and became known as St Francis Xavier's Catholic School. Mr and Mrs Coghlan taught at this school until the Sisters of Mercy arrived from Ireland on 31st August 1875. The Sisters conducted the Singleton schools until the 1970s.

Upon the Sisters' arrival they established a school for girls which was the beginning of St Catherine's College – a day and boarding school for girls. A new building for St Catherine's College was completed in 1913 and this formed the basis of the school until an extensive building program was carried out in the 1960s. The boarding school gradually closed in 1970s. 1974 saw the first intake of boys into the Year 7 class thus beginning the move to a co-educational high school.

St Francis Xavier's School was located in Cambridge Street, Singleton on the site of the original 1868 school. New buildings were added in 1951 and 1965 thus replacing the original school. St Francis Xavier's became the primary school for the parish until its closure in 2000.

1972 saw the reorganisation of schools in the Singleton parish. St Augustine's School at South Singleton which had opened in 1927 was closed and students transferred to the new Catholic Junior School in Patrick Street.

With the formation of the new Kindergarten to Year 12 College in 2001, the primary classes began their relocation onto the one site adjacent to the Convent of Mercy and incorporating the buildings of St Catherine's College. In 2002, the site was purchased from the Sisters of Mercy and with the assistance of three Commonwealth grants, funding from the Diocesan Schools Building Levy Program and St Patrick's Parish, a building program for new facilities was commenced. The infants classes moved to the College site in 2010 when the building program was completed.



ARCHITECTURE

St Catherine's received two stages of significant Commonwealth grant funding between 2004 and 2007 which provided a range of new and modern facilities including an administration and staff block, specialised art and TAS areas as well as a new school library, classrooms and science laboratories. Operating as a K-12 school, the remote location of the primary classrooms across the main road provided a significant challenge to the management of the site. The BER funding received in 2010 relieved this situation significantly by providing funds for the construction of new primary classrooms on the main school site to replace the original demountable classrooms.

YEAR	DESCRIPTION	LOCAL CONTRIBUTION	GOVERNMENT GRANT	TYPE	PROJECT COST
2006	All New School Buildings	\$1,768,027	\$3,202,744	GNE	\$4,970,771
2007	Construction & Refurbishment of Classrooms	\$392,764	\$916,380	GNE	\$1,309,144
2007	Refurbishment of Classrooms & Administration & Upgrade of Electrical Reticulation	\$2	\$200,000	BER-NSP	\$200,002
2009	Construction & Refurbishment of Classrooms	\$400,000	\$3,535,372	BER-P21	\$3,935,372
2009	Trade Training Centre - Purchase of Farm for Agricultural Studies	\$52,915	\$1,516,585	TTC	\$1,569,500



St Peter's Primary School, Stockton

A: Dunbar Street STOCKTON 2295
PO Box 78 STOCKTON 2295

P: 4928 1861

F: 4920 1736

E: admin@stockton.catholic.edu.au

W: <http://stockton.catholic.edu.au>

Enrolment: 78

Kindergarten to Year 6

Region: North

Parish: Stockton





HISTORY

Stockton has often been called the first suburb in Newcastle. It was originally known as Pirates Point after a gang of escaped convicts who had seized a boat were wrecked there in 1800.

A Catholic school in Stockton was established in 1887 when classes began in the new St Peter's Church which was blessed and opened by Bishop Murray on 30 January of that year. The first teacher was Miss Pierce, her position being funded by the Stockton parishioners. In 1903 a weatherboard school was opened and about that time the Sisters of Mercy were asked to take charge of the school. Up until 1920 the Sisters would come each day by tram and ferry from the Convent in Hamilton to teach at the school. The women of the parish took it in turn to provide lunch for the Sisters.

A new brick school was added in 1925 and these buildings formed the nucleus of the school until a Kindergarten room was opened in King Street in 1957. This building was closed in the 1970s and Kindergarten was incorporated in the present two storey building which opened in July 1971.

From 1973 to 1985 Sister Mary Bernardine was the principal of the school and upon her leaving the school became fully lay staffed.

ARCHITECTURE

St Peter's was the beneficiary of a Commonwealth grant in 2006 which was used to refurbish a majority of the school's main two storey building, including a new entry and administration area as well as refurbished library, classrooms and canteen. The additional funds received through the BER program were used to install a lift to make the school fully access compliant and the original school and parish hall was also refurbished.

YEAR	DESCRIPTION	LOCAL CONTRIBUTION	GOVERNMENT GRANT	TYPE	PROJECT COST
2004	Construction of Classrooms, Administration, Staff & Library	\$347,314	\$354,715	ISOP	\$702,029
2009	Refurbishment of School Facilities - External and Internal	\$1	\$75,000	BER-NSP	\$75,001
2009	Refurbishment of Multi-Purpose Hall & Construction of Lift	\$0	\$498,067	BER-P21	\$498,067



St Patrick's Primary School, Swansea

A:	213 Northcote Avenue SWANSEA 2281 PO Box 141 SWANSEA 2281
P:	4971 1560
F:	4972 0123
E:	admin@swansea.catholic.edu.au
W:	http://swansea.catholic.edu.au
Enrolment:	116
Kindergarten to Year 6	
Region:	Lakes
Parish:	East Lake Macquarie



HISTORY

The Sisters of St Joseph, Lochinvar purchased the property at Northcote Avenue, Swansea in 1941 as a place for Sisters needing rest and care. Its position on the shores of Black Ned's Bay was an ideal location for this purpose. In January 1952 the Sisters were asked to staff the new St Patrick's School in Wood Street, near the church on the block of land that is adjacent to the present day McDonald's restaurant. Extensions were opened across the road in Wood Street in 1971.

The school was relocated to its present position during 1977/1978. All parish buildings including the school, church and parish cottage were transported to this site on land generously given by the Sisters of St Joseph to the parish of Swansea to be used for educational purposes.

In 1996 the Sisters moved to villas built on land adjacent to the school. The original convent which was situated in the centre of the property was demolished thus allowing the school to expand on a clear site. Following this development, the administration area was relocated and two demountables were installed for library and classroom use.

In 2005, with funding from a Commonwealth Government Grant and funding from the Diocesan Family School Building Levy, the old school was completely demolished and a new school constructed. This project was completed in April 2006.

ARCHITECTURE

A significant Capital grant received in 2005 provided enough funding to completely rebuild St Patrick's Primary school on its magnificent waterfront site. Subsequently, the allocated BER funding was used to construct a multi-purpose hall with a magnificent aspect overlooking the water. Dedicated parking space and accessible amenities allow the building to be widely used by the school and parish community.





YEAR	DESCRIPTION	LOCAL CONTRIBUTION	GOVERNMENT GRANT	TYPE	PROJECT COST
2005	Construction of Administration, Staff & Library & Refurbishment of COLA	\$1,607,133	\$618,983	GNE	\$2,226,116
2009	Refurbishment of School Facilities - External & Construction of COLA	\$2	\$75,000	BER-NSP	\$75,002
2009	Construction of Multi-Purpose Hall	\$0	\$850,000	BER-P21	\$850,000



St Clare's High School, Taree

A:	Davis Street TAREE 2430 Davis Street TAREE 2430
P:	6552 3300
F:	6552 3656
E:	admin@tareesc.catholic.edu.au
W:	http://tareesc.catholic.edu.au
Enrolment:	714
Year 7 to Year 12	
Region:	Manning
Parish:	Taree





HISTORY

The Sisters of St Joseph commenced secondary education in the Manning/Great Lakes area in 1926. The Rosary High School, Taree was conducted in what was then the old church and is now the parish hall. A larger school was built closer to the convent boarding school in 1962 but even before the building was completed it was understood that it would be unable to cater for the area's growing demand.

In 1970 five acres of parish owned land at Chatham was selected as the site for a regional High School. A new school, called Taree Catholic High, was built at a cost of \$87,000. The school, which was officially opened in January 1971, was dedicated to the memory of Fr Thomas Mulcahy who was a tireless worker for Catholic education in the Manning region. Further buildings were added as school enrolments increased. Major building projects costing over \$1.3 million were completed in the 1980s with funding from both Commonwealth grants and diocesan contributions.

In 1986 Year 11 was introduced and with this move to a Senior Secondary School, the name once again changed to become St Clare's High School, Taree. In the late 1990s significant projects were completed including a new library, additional classrooms, specialty rooms and refurbishment of the science laboratories.

ARCHITECTURE

A steady increase in student numbers at St Clare's required an initial expansion of the facilities with demountable classrooms. The DF&SBL provided full funding to replace these demountables in 2006 with a new classroom and music block overlooking the school's main playing fields. In 2007 the school community commenced construction of a new multi-purpose hall space which it had been working towards for many years. In 2009 through the BER program, the school won a competitive grant to refurbish its science facilities and again in 2010 it received a further Commonwealth grant to construct Trade Training facilities for hospitality and construction courses. The award winning hospitality facility is a bright and engaging building which integrates well with the existing facilities, and a final grant received in 2012 has allowed the school to refurbish its ageing Technical and Applied Studies (TAS) block.



YEAR	DESCRIPTION	LOCAL CONTRIBUTION	GOVERNMENT GRANT	TYPE	PROJECT COST
2005	Construction of Classrooms & Canteen Refurbishment	\$620,567	\$0	Special	\$620,567
2007	Construction of Multi-Purpose Hall	\$1,070,394	\$0	Special	\$1,070,394
2009	Refurbishment of School Facilities - External & Internal & Construction of COLA	\$3	\$200,000	BER-NSP	\$200,003
2009	Refurbishment of Science Laboratories	\$0	\$839,195	BER-SLC	\$839,195
2009	Trade Training Centre - Hospitality & Construction	\$75,127	\$1,363,635	TTC	\$1,438,762
2010	Refurbishment of TAS & Art Classrooms	\$485,653	\$714,347	GNE	\$1,200,000



St Joseph's Primary School, Taree

A:	1 St Joseph's Drive TAREE 2430 1 St Joseph's Drive TAREE 2430
P:	6557 7031
F:	6557 7030
E:	admin@tareesj.catholic.edu.au
W:	http://tareesj.catholic.edu.au
Enrolment:	396
Kindergarten to Year 6	
Region:	Manning
Parish:	Taree



HISTORY

Great preparations had been made under the direction of Fr Coady for the arrival of the Sisters of St Joseph at Taree in January 1923. A new convent and a brick primary school on Wynter Street had recently been completed ready for the Sisters to begin St Joseph's Primary School and a girls boarding school at the beginning of the school year. The boarding school continued until 1965. Rosary High School was established on the parish site in 1926.

When the high school relocated to Chatham in 1971, the pupils from third to sixth classes at St Joseph's Primary School moved into the vacated secondary school building which had been built in 1962. In 1972 the original 1923 school was demolished and replaced with a modern infants school consisting of three double classrooms based on 'open plan' teaching.

With the closure of St Joseph's Primary and Boys' Boarding School at Cundletown in 1968 and St Joseph's Primary School Krumbach in 1989, students who were able to travel transferred to St Joseph's Taree.

Increasing enrolments and cramped conditions led to a new school being opened at St Joseph's Drive on 25 May 1998.

ARCHITECTURE

St Joseph's was relocated and constructed as a new school on its current site back in 1998. The school has grown and developed on the site with only minor building alterations since that period, until the announcement of the BER program. This funding has allowed the school to increase its facilities to match more appropriately the current and changing needs of this school community. The funds were used to extend the existing multi-purpose hall, refurbish and extend the staff and administration block and also construct additional required specialist teaching spaces.





YEAR	DESCRIPTION	LOCAL CONTRIBUTION	GOVERNMENT GRANT	TYPE	PROJECT COST
1995/ 1998	Construction of Primary School	\$1,024,661	\$2,289,607	GNE	\$3,314,268
2009	Refurbishment of School Facilities - External & Internal & Construction of COLA	\$1	\$150,000	BER-NSP	\$150,001
2009	Extension to Multi-Purpose Hall & Classrooms, Refurbishment of Administration & Amenities & External works	\$0	\$1,696,465	BER-P21	\$1,696,465



Our Lady of Lourdes Primary School, Tarro

A:	Anderson Drive TARRO 2322 PO Box 246 BERESFIELD 2322
P:	4966 1302
F:	4966 1322
E:	admin@tarro.catholic.edu.au
W:	http://tarro.catholic.edu.au
Enrolment:	328
Kindergarten to Year 6	
Region:	All Saints
Parish:	Beresfield





HISTORY

The Parish of Beresfield began as a station of East Maitland when a church was built at Tarro in 1922 on the site of the present parish school. It became the Parish of Tarro in 1947 covering Tarro, Beresfield and Thornton.

The Sisters of Mercy commenced Our Lady of Lourdes School on 12 September 1944. For thirteen years the church at Tarro served as both school and church. The brick veneer school was blessed and opened by Bishop Toohey on 29 June 1958. Demountable classrooms were acquired as the school grew and in 1985 the school administration area was built using government and parish funding. The old church is now the school hall and is fitted with a new stage and houses the K-2 Rainbow classroom.

ARCHITECTURE

Our Lady of Lourdes has been growing steadily over the last several years and a Commonwealth grant received in 2007 was a timely injection of funding to construct a new library and classrooms and refurbish the existing pupil amenities. Located on a compact site, the school was somewhat limited in its capacity to use the full allocation of BER funding available. The existing heritage listed hall (originally the church) could be refurbished but not extended and so a separate multi-purpose facility was constructed as well as an extension to the staff area and refurbishment of the remaining pupil amenities areas.

YEAR	DESCRIPTION	LOCAL CONTRIBUTION	GOVERNMENT GRANT	TYPE	PROJECT COST
2005	Construction & Refurbishment of Classrooms, Administration, Staff & Library	\$921,455	\$966,099	ISOP	\$1,887,554
2009	Refurbishment of School Facilities - External & Internal, Construction of COLA	\$2	\$124,962	BER-NSP	\$124,964
2009	Refurbishment and Construction of Multi-Purpose Hall Space, Construction of Student Amenities	\$0	\$848,060	BER-P21	\$848,060



St Patrick's Primary School, Wallsend

A:	Macquarie Street WALLSEND 2287 PO Box 190 WALLSEND 2287
P:	4955 8570
F:	4955 8113
E:	admin@wallsend.catholic.edu.au
W:	http://wallsend.catholic.edu.au
Enrolment:	222
Kindergarten to Year 6	
Region:	Central
Parish:	Wallsend-Shortland



HISTORY

A small stone church/school was opened on the hill in Macquarie Street, Wallsend in 1876 and a Denominational Catholic school began about this time. The school traces its beginnings to January 1883 when two Sisters of Mercy who lived at the Lambton convent commenced teaching at St Patrick's. In 1902 land was purchased across the road from the original church and this has become the nucleus of the parish complex. A brick school with verandas on each side was erected on this site in the same year.

Major developments occurred in the 1950s when, under the direction of Fr James Brennan and with voluntary labour, two timber classrooms were built facing Neilson Street. In 1963 a new wing facing Wentworth Street was added. This included four classrooms, an office, storeroom, staffroom, canteen and lunch area as well as a further classroom on the Neilson Street wing. When the 1902 building, which was being used as a hall, collapsed in a fierce storm in 1978 plans took shape for a new hall, library and canteen. The work was completed in 1983 in time for the Centenary celebrations of the school. Later a cottage in Macquarie Street was renovated for school administration and staff facilities. In 1996 a new classroom, COLA and student toilets were opened. A Commonwealth grant in 2007 enabled the school to be redeveloped and refurbished.

The Sisters of Mercy administered the school for ninety years.





ARCHITECTURE

St Patrick's was operating out of less than ideal facilities until it received a Commonwealth grant in 2007. This funding provided a significant opportunity to redevelop most of the school's facilities including a new staff and administration block, new library and classrooms and also new pupil amenities. The siting of the new buildings also allowed for a more practical front entrance to the school adjacent to the church and inherently provided a more secure entry into the school site. Enhanced further with BER funding in 2011, the school community was able to extend its existing multi-purpose hall and construct additional teaching space and refurbished pupil amenities.

YEAR	DESCRIPTION	LOCAL CONTRIBUTION	GOVERNMENT GRANT	TYPE	PROJECT COST
2005	Construction Classrooms, Administration, Staff, Library & Stores	\$995,072	\$1,059,403	GNE	\$2,054,475
2009	Refurbishment of School Facilities - External & Internal, Construction of COLA	\$730	\$127,272	BER-NSP	\$128,002
2009	Refurbishment of Multi-Purpose Hall & Classrooms	\$16,776	\$1,500,000	BER-P21	\$1,516,776



Corpus Christi Primary School, Waratah

A: Platt Street WARATAH 2298
PO Box 63 WARATAH 2298

P: 4968 3220

F: 4968 3833

E: admin@waratah.catholic.edu.au

W: <http://waratah.catholic.edu.au>

Enrolment: 195

Kindergarten – Year 6

Region: North

Parish: Blackbutt North



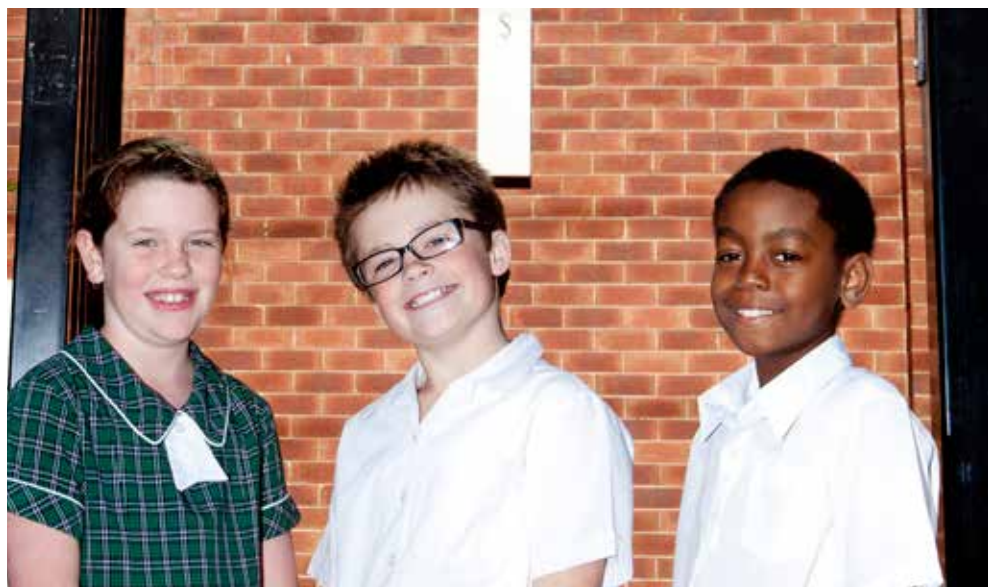


HISTORY

Catholic education in Waratah began in 1888 when the Dominican Sisters established the Waratah Deaf and Dumb Institute, a boarding school for boys and girls with a hearing disability. In 1907, at Bishop Murray's request, the Sisters agreed to staff a primary school for the area. This developed into the official parochial when Waratah became a parish in 1917. This school was known as St Joseph's or 'The Rosary Convent School' for it was conducted in a three room cottage owned by the Sisters in Alfred Street, opposite the Rosary Convent gate. By 1933 the old weatherboard building was unable to accommodate comfortably the various classes.

In 1934 the Corpus Christi Parish Waratah built the ground floor of the current school building at a cost of £2,019. The second storey of the school was added in 1954. A school hall was constructed in 1963 at a cost of £24,000. Extensions and improvements have been made to the buildings and grounds over the years.

The school continued to be run by the Dominican Sisters until 1987.



ARCHITECTURE

Corpus Christi is another primary school on a very compact suburban site. Commonwealth grant funding was received in 2002 to construct a library and administration area as well as some associated refurbishment works. When the BER program was announced in 2009 it provided a unique yet complex opportunity to develop further the school's facilities. The limited site area led to an innovative design solution to improve the functionality of the classrooms and further extend the library into the undercroft. The adjacent parish and school hall was also substantially refurbished with the funding to create a much more functional facility now used by all members of the school and parish community.

YEAR	DESCRIPTION	LOCAL CONTRIBUTION	GOVERNMENT GRANT	TYPE	PROJECT COST
2000	Construction of Classrooms, Library, Canteen, Disable Facilities & Refurbishment of other Classrooms	\$553,120	\$298,150	GNE	\$851,270
2009	Refurbishment of School Facilities - External & Internal	\$1	\$125,000	BER-NSP	\$125,001
2009	Refurbishment of Library & Multi-purpose Hall	\$0	\$1,467,191	BER-P21	\$1,467,191



St Mary's Primary School, Warners Bay

A:	2 Bayview Street WARNERS BAY 2282 PO Box 306 WARNERS BAY 2282
P:	4948 8770
F:	4948 9470
E:	admin@warnersbay.catholic.edu.au
W:	http://warnersbay.catholic.edu.au
Enrolment:	428
Kindergarten to Year 6	
Region:	Lakes
Parish:	Boolaroo-Warners Bay



HISTORY

St Mary's School Warners Bay began in 1958 when two Sisters of St Joseph enrolled 41 students in Kindergarten and First Class in a two roomed school recently built on parish land. The Sisters travelled each day from their Convent in Boolaroo where they had conducted Our Lady Help of Christians Primary School since 1926.

By 1960 The Warners Bay school had grown to include all primary grades. However, with small numbers in each school it was decided in 1969 to make St Mary's an infants school

and primary students attended classes at Boolaroo. Because of the high cost of maintaining two parish schools a decision was made to close Boolaroo school at the end of 1976 and the school buildings were relocated to Warners Bay. The parish had purchased extra land at Warners Bay to provide for the growing school.

By 1983 it was apparent that major development was required. An application for a Capital grant from the Commonwealth Schools Commission was submitted and

in 1986 \$330,800 was received towards the \$510,800 project which included four new classrooms, an administration block, the relocation of existing classrooms and landscaping. This was the beginning of many changes that have occurred in the following years.

The Sisters of St Joseph who were from North Sydney withdrew from the school in 1981.



ARCHITECTURE

St Mary's was in desperate need of a major redevelopment and in 2007 and 2009 was the recipient of two separate stages of Commonwealth grant funding. This significant injection of capital allowed the school to be substantially redesigned and rebuilt on its existing site. The sloping tree studded site provided challenges and opportunities which the architects fully embraced. The final design solution sits comfortably on the site and blends well within the context of the adjacent residential houses. Having just completed the redevelopment project when the BER program was announced, the school community was happy to share a significant proportion of its allocation with other schools in the diocese which were still in need of major capital works.



YEAR	DESCRIPTION	LOCAL CONTRIBUTION	GOVERNMENT GRANT	TYPE	PROJECT COST
2005	Construction Classrooms, Administration, Staff, Library	\$1,231,267	\$1,440,208	ISOP	\$2,671,475
2007	Construction Classrooms, Administration, Staff Facilities	\$510,084	\$917,463	ISOP	\$1,427,547
2009	Construct COLA & Security Fence, Refurbishment of School Facilities - External	\$4	\$200,000	BER-NSP	\$200,004
2009	Refurbishment of Classrooms & Construction of COLA & Associated Works	\$0	\$500,000	BER-P21	\$500,000



St Pius X Primary School, Windale

A:	12 Lake Street WINDALE 2306 12 Lake Street WINDALE 2306
P:	4948 8467
F:	4947 2238
E:	admin@windale.catholic.edu.au
W:	http://windale.catholic.edu.au
Enrolment:	50
Kindergarten to Year 6	
Region:	Lakes
Parish:	East Lake Macquarie



HISTORY

Prior to 1959, the Catholic children of Windale (called Surprise Town until 1951), were educated at the local state school, or travelled to neighbouring Catholic schools at Charlestown or Belmont. Windale was part of the Archdiocese of Sydney until 1966 when it was transferred to the care of the Maitland Diocese.

Three Sisters of St Joseph opened St Pius X Primary School at Windale on 27 January 1959 with an enrolment of 77 pupils. Originally the school was conducted in the church building which was opened in 1955. Fr Barry O'Hearn was appointed Parish Priest when the parish was established in 1967. He quickly set about obtaining more classrooms for the growing school population. A classroom from Tighes Hill was erected in the grounds in 1967, and in 1968 a new demountable classroom was built by Lysaght's. Further buildings were acquired as the need arose.

The school in its present form began to take shape in 1986 when the school administration building was completed at a cost of \$185,700. This was partly funded by a Commonwealth Schools Commission grant of \$168,700. A major building project was completed in 1993 providing the school with four new classrooms, a tuck shop and other facilities.

ARCHITECTURE

The announcement of the BER program provided a unique opportunity for St Pius X. Being a relatively small school, the BER funding allocation was significant enough to construct a new multi-purpose hall and a new school library. These new facilities are used for a range of programs and have been a significant improvement for this school community.





YEAR	DESCRIPTION	LOCAL CONTRIBUTION	GOVERNMENT GRANT	TYPE	PROJECT COST
2009	Refurbishment of Site Landscaping & School Facilities - External & Internal	\$0	\$50,000	BER-NSP	\$50,000
2009	Construction of Library & Multi-Purpose Hall	\$68,455	\$800,000	BER-P21	\$868,455



St Joseph's Primary School, Wingham

A:	Church Crescent WINGHAM 2429 PO Box 132 WINGHAM 2429
P:	6553 4774
F:	6553 4218
E:	admin@wingham.catholic.edu.au
W:	http://wingham.catholic.edu.au
Enrolment:	134
Kindergarten to Year 6	
Region:	Manning
Parish:	Wingham

HISTORY

St Joseph's Convent at Wingham was opened in January, 1935 and four Sisters of St Joseph resided there. The 1901 built church served as church and school, with classes separated by a curtain on school days. Extensions were made to the church/school in 1947. The present church was opened in May 1953 and the old church continued as a school until the present school was opened in April 1974. In 1982 the small convent was closed and the Sisters moved into Taree Convent.

During 1984 the school administration area was converted into classrooms. At the same time, the convent was converted into the administration block, containing the offices, staff room, library and canteen. All work was carried out on a voluntary basis, under qualified supervision, ensuring the total convent area could be employed in the Catholic education apostolate. In 2001 the school again underwent a significant upgrade including the restoration of the old convent building and the building of new amenities and covered walkways.





ARCHITECTURE

There had been no significant development at St Joseph's Primary School for many years prior to the announcement of the BER program. The funding received through this government stimulus initiative provided a unique opportunity for the school to build a new hall and library - facilities it may have only dreamed about prior to the February 2009 announcement. The outcome of this BER project epitomised the intent of the government's scheme, as the new facilities were designed and constructed with entirely local input. The architect, builder and even the bricks were home grown in Wingham and the value for money and quality of the design and function of the spaces are outstanding. The buildings have won Architectural and Master Builders Awards.

YEAR	DESCRIPTION	LOCAL CONTRIBUTION	GOVERNMENT GRANT	TYPE	PROJECT COST
2001	Construction & Refurbishment of School Facilities	\$111,461	\$260,078	GNE	\$371,539
2004	Refurbishment of Site Landscaping & School Facilities - External & Internal	\$0	\$75,000	NSP	\$75,000
2009	Construction of Library & Multi-Purpose Hall	\$850,000	\$0	P21	\$850,000

Summary of Capital Works from 1998 to current (costs as at 4/3/14)

Figures in italics, represent projects under construction/estimated budget

* Indicates funding originally allocated to Greta, St Mary's Infants School

Indicates funding originally allocated to Branxton, St Brigid's Primary School

SCHOOL	YEAR	DESCRIPTION	LOCAL CONTRIBUTION	GOVERNMENT GRANT	TYPE	PROJECT COST
Aberdeen - St Joseph's High School	1999	Construction of Library & Refurbishment of Classrooms	\$545,379	\$502,225	GCGP	\$1,047,604
	2009	Upgrade of Electrical Reticulation	\$0	\$200,000	BER-NSP	\$200,000
	2009	Refurbishment of Science Laboratories	\$106,654	\$873,346	BER-SLC	\$980,000
	2009	Trade Training Centre – Metal & Engineering & Construction	\$280,558	\$1,236,714	TTC	\$1,517,272
	2012	Construction of Library & Classrooms & Staff Facilities	\$3,400,000	\$3,500,000	GNE	\$6,900,000
Abermain – Holy Spirit Infants School	1998	Upgrade of School Facilities	\$35,519	\$60,631	GNE	\$96,150
	2004	Construction of Administration, Staff, Library, Classrooms & Store	\$400,167	\$805,407	ISOP	\$1,205,574
	2009	Refurbishment of School Facilities - External & Internal	\$846	\$75,000	BER-NSP	\$75,846
	2009	Refurbishment of Multi-Purpose Hall, Student Hall & Shade Structure	\$0	\$349,918	BER-P21	\$349,918
Adamstown – St Columba's Primary School	2009	Refurbishment of School Facilities - External & Internal, construction of Shade Structure & Procurement of School Equipment	\$5	\$125,003	BER-NSP	\$125,008
	2009	Refurbishment of Multi-Purpose Hall & Construction of Associated Student Amenities, Classrooms & Associated Works	\$19,880	\$1,439,532	BER-P21	\$1,459,412
Adamstown – St Pius X High School	2009	Refurbishment of School Facilities - External & Internal	\$56	\$200,221	BER-NSP	\$200,277
	2009	Stage 1, Refurbishment of Classrooms, Administration & Multi-Purpose Hall	\$3,093,889	\$2,488,706	GNE	\$5,582,595
	2009	Trade Training Centre - Hairdressing Salon & Hospitality Commercial Kitchen	\$0	\$600,000	TTC	\$600,000
	2011	Stage 2, Refurbishment of Science & TAS Classrooms	\$2,000,000	\$1,583,189	BGAS	\$3,583,189
Belmont – St Francis Xavier's Primary School	2009	Refurbishment of School Facilities - External & Internal, Construction of Security Fence	\$0	\$75,000	BER-NSP	\$75,000
	2009	Refurbishment of Classrooms. Library & Associated Works	\$0	\$850,000	BER-P21	\$850,000
Booragul – St Paul's High School	1999	Stage 2, Classrooms & Specialty Teaching Rooms	\$390,000	\$910,000	GNE	\$1,300,000
	2000	Construction of Classrooms, Canteen, Hall & Performing Arts	\$645,098	\$1,505,229	GNE	\$2,150,327
	2009	Refurbishment of School Facilities - External, Upgrade of Electrical Reticulation, Construction of Security Fence	\$268	\$200,000	BER-NSP	\$200,268
	2009	Trade Training Centre - Construction & Hospitality Commercial Kitchens	\$0	\$3,154,427	TTC	\$3,154,427
	2013	Construction of General Learning Area & Specialised Library Area, Administration & Covered Outdoor Learning Area.	\$2,178,150	\$2,691,850	BGAS	\$4,870,000

Branxton – Rosary Park Catholic School	2009	Construction of Security Fencing & Procurement of Furniture & Equipment	\$0	\$74,997	BER-NSP	\$74,997 *
	2009	Construction of Security Fencing & Procurement of Furniture & Equipment	\$0	\$75,000	BER-NSP	\$75,000 #
	2009	Construction of Multi-Purpose Hall, Classrooms, Library & Administration/ Staff Facilities	\$508,125	\$4,809,485	BER-P21	\$5,317,610 #
Bulahdelah – St Joseph's Primary School	2002	All new school buildings	\$757,893	\$539,807	GNE	\$1,297,700
	2009	Refurbishment of School Facilities - External & Internal, Construction of Security Fence	\$0	\$49,977	BER-NSP	\$49,977
	2009	Construction of Covered Outdoor Learning Area	\$0	\$49,950	BER-P21	\$49,950
Cardiff – St Kevin's Primary School	2009	Refurbishment of Buildings & Grounds, Construction of Security Fence	\$1	\$75,000	BER-NSP	\$75,001
	2009	Construction of Multi-Purpose Hall & Refurbishment of Library	\$4,491	\$851,049	BER-P21	\$855,540
Cessnock - St Patrick's Primary School	2004	Construction & Refurbishment of Classrooms, Staff & Library	\$860,057	\$759,758	GNE	\$1,619,815
	2009	Refurbishment of Buildings & Roof Replacement	\$0	\$149,955	BER-NSP	\$149,955
	2009	Construction of Multi-Purpose Hall, Library & Classrooms	\$2,242	\$1,984,132	BER-P21	\$1,986,374
Charlestown – St Joseph's Primary School	2009	Refurbishment of School Facilities - External & Internal, Classrooms Joinery Works	\$2	\$125,000	BER-NSP	\$125,002
	2009	Construction of Library & Refurbishment of Administration, Staff Facilities & Classrooms	\$29,349	\$2,000,000	BER-P21	\$2,029,349
Chisholm – St Aloysius Catholic Primary School	2013	Construction of New Primary School Stage 1	\$4,000,000	\$3,000,000 Estimate	GNE	\$7,000,000
Denman – St Joseph's Primary School	2009	Refurbishment of Buildings & Grounds, Data & Comms Equipment & Infrastructure	\$2	\$50,000	BER-NSP	\$50,002
	2009	Construction of Library, Administration, Staff & Amenities, Refurbishment of Classrooms & Associated Works	\$284,923	\$750,000	BER-P21	\$1,034,923
Dungog – St Joseph's Primary School	2004	Construction & Refurbishment of Classrooms & Canteen	\$689,854	\$657,465	GNE	\$1,347,319
	2009	Refurbishment of School Facilities - External & Internal & Construction of COLA	\$1	\$75,000	BER-NSP	\$75,001
	2009	Construction of Sports Storage Area, Refurbishment of External Play Areas	\$0	\$150,000	BER-P21	\$150,000
East Maitland – St Joseph's Primary School	2009	Refurbishment of School Facilities - External & Internal, Construction of Security Fence, Procure ICT Equipment & Infrastructure	\$2	\$200,000	BER-NSP	\$200,002
	2009	Refurbishment of School Buildings & Library	\$0	\$1,500,000	BER-P21	\$1,500,000
Edgeworth – St Benedict's Primary School	2004	Construction of Classrooms	\$880,419	\$1,070,934	ISOP	\$1,951,353
	2009	Construct COLA, Refurbishment of School Facilities - External & Upgrade of Electrical Reticulation	\$1	\$125,000	BER-NSP	\$125,001
	2009	Construction of Multi-Purpose Hall & Classrooms	\$26,573	\$2,001,595	BER-P21	\$2,028,168
Forster – Holy Name Primary School	2001	Construction of Hall, Administration & Staff Facilities, Student Amenities, Refurbishment of Classroom & Computer Room	\$891,307	\$551,208	GNE	\$1,442,515
	2009	Refurbishment of School Facilities - External & Internal, Construction of Security Fence & Shade Structure	\$0	\$125,001	BER-NSP	\$125,001
	2009	Refurbishment of Classrooms & Associated Works & Extension of Library & Associated Works	\$0	\$1,498,951	BER-P21	\$1,498,951

Gateshead – St Mary's High School	2005	Construction of Music Rooms, Student Facilities, Science Laboratory, Senior Learning Area and TAS Area	\$726,159	\$970,824	GNE	\$1,696,983
	2009	Construct COLA, Refurbishment of School Facilities - External & Upgrade of Electrical Reticulation	\$2	\$200,000	BER-NSP	\$200,002
	2009	Trade Training Centre - Dust Control & Fume Extraction & Agricultural Equipment	\$0	\$62,830	TTC	\$62,830
	2011	Science Laboratories Refurbishment	\$700,000	\$0	Special	\$700,000
Gateshead – St Paul's Primary School	2001	Construction of Classrooms & Student Facilities	\$649,583	\$1,515,686	GNE	\$2,165,269
	2009	Refurbishment of School Facilities - Internal & Procure ICT Equipment & Infrastructure	\$0	\$122,728	BER-NSP	\$122,728
	2009	Construction of Multi-Purpose Hall & Refurbishment of Library	\$17,937	\$2,500,000	BER-P21	\$2,517,937
Glendale – Holy Cross Primary School	2009	Refurbishment of School Facilities - Internal & Roof Replacement	\$0	\$75,000	BER-NSP	\$75,000
	2009	Construction of Library, Staff, Classrooms, Administration & Amenities	\$7,832	\$3,420,000	BER-P21	\$3,427,832
Gloucester - St Joseph's Primary School	2009	Refurbishment of School Facilities - External & Internal	\$0	\$75,000	BER-NSP	\$75,000
	2009	Construction of Multi-Purpose Hall & Refurbishment of Library	\$1	\$848,110	BER-P21	\$848,111
Hamilton– St Francis Xavier's College	2004	Construction of Multi-Purpose Hall	\$2,393,072	\$0	Special	\$2,393,072
	2009	Refurbishment of School Facilities - External & Internal, Upgrade of Electrical Reticulation, Procure Classroom Furniture	\$4	\$200,000	BER-NSP	\$200,004
	2010	Special Learning Area	\$172,000	\$0	Special	\$172,000
	2010	Trade Training Centre - Construction & Hospitality Centre with Commercial Kitchens	\$0	\$2,309,528	TTC	\$2,309,528
	2013	Accessibility Upgrade including Walkway Replacement	\$1,900,000	\$0	Special	\$1,900,000
Kilaben Bay - St Joseph's Primary School	2009	Refurbishment of School Facilities - External & Internal, Construction of Shade Structure	\$4	\$150,000	BER-NSP	\$150,004
	2009	Construction of Multi-Purpose Hall & Refurbishment of Classroom & Associated Works	\$0	\$1,998,405	BER-P21	\$1,998,405
Kotara South – St James' Primary School	2007	Construction of Administration, Staff, Classrooms & Walkways	\$839,600	\$645,031	ISOP	\$1,484,631
	2009	Construct COLA, Refurbishment of School Facilities - External & Internal	\$0	\$125,000	BER-NSP	\$125,000
	2009	Construction of Multi-Purpose Hall, Refurbishment of Library & Associated Works	\$0	\$2,280,177	BER-P21	\$2,280,177
Kurri Kurri – Holy Spirit Primary School	2006	Construction of Classrooms, Administration & Amenities	\$285,739	\$587,196	GNE	\$872,935
	2009	Refurbishment of School Facilities - External & Internal	\$0	\$75,000	BER-NSP	\$75,000
	2009	Refurbishment of Library, Amenities , External Works & Associated Works	\$0	\$578,794	BER-P21	\$578,794
	2012	Replacement of Covered Outdoor Learning Area & Associated Works	\$80,000	\$0	Special	\$80,000
Lambton – St John's Primary School	2005	Construction of Library & Classrooms & Refurbishment of Classrooms	\$717,450	\$694,449	ISOP	\$1,411,899
	2009	Refurbishment of School Facilities - External & Internal & Procure ICT Equipment & Infrastructure	\$1	\$125,000	BER-NSP	\$125,001
	2009	Construction & Refurbishment of Classrooms & Refurbishment of Multi-Purpose Hall	\$395,871	\$584,749	BER-P21	\$980,620

Lochinvar – ASC, St Joseph's Campus	2009	Refurbishment of School Facilities	\$0	\$67,000	BER-NSP	\$67,000
	2009	Trade Training Centre - Hospitality & Electro	\$2,646	\$675,000	TTC	\$677,646
	2009 & 2010	Stage 1, Construction of Administration, Staff, Library & GPLA's. Stage 2, Construction of TAS Workshop & Classrooms	\$5,114,389	\$5,012,012	GNE	\$10,126,401
Lochinvar – St Patrick's Primary School	2002	Construction of Canteen & Withdrawal Area & Convert Canteen to Extent Current Hall	\$100,000	\$0	Special	\$100,000
	2009	Refurbishment of School Facilities - External & Internal & Upgrade of Electrical Reticulation	\$1	\$125,000	BER-NSP	\$125,001
	2009	Construction of Multi-Purpose Hall & Classrooms	\$0	\$1,950,000	BER-P21	\$1,950,000
Maitland – ASC, St Mary's Campus	2003	Construction of TAS, Classrooms, Science & Student Amenities	\$1,341,359	\$2,371,468	GNE	\$3,712,827
	2007	Installation of Lift	\$246,912	\$110,000	Special Needs	\$356,912
	2009	Refurbishment of School Facilities & COLA - External & Internal	\$3,438	\$200,000	BER-NSP	\$203,438
	2009	Trade Training Centre - Hospitality & Electro	\$341,745	\$2,931,400	TTC	\$3,273,145
Maitland – ASC, St Peter's Campus	2008	Stage 1, Construction of Library & Refurbishment of Science Labs	\$1,941,176	\$3,200,000	GNE	\$5,141,176
	2009	Trade Training Centre - Furnishing & Construction	\$0	\$675,000	TTC	\$675,000
	2011	Stage 2, Construction & Refurbishment of Music, TAS, Administration, Staff & Classrooms	\$2,950,000	\$3,295,738	GNE	\$6,245,738
Maitland - St John the Baptist Primary School	2009	Refurbishment of Facilities - External and Internal	\$2	\$125,000	BER-NSP	\$125,002
	2009	Construction of Library, Multi-Purpose Hall & Associated Works, Replacement of Administration & Classrooms	\$0	\$4,443,012	BER-P21	\$4,443,012
Mayfield – San Clemente High School	2005	Construction of Classrooms	\$899,090	\$1,546,406	ISOP	\$2,445,496
	2007	Refurbishment of Administration, Staff & Classrooms	\$825,775	\$735,156	ISOP	\$1,560,931
	2009	Refurbishment of School Facilities - External & Construction of Security Fence	\$1	\$200,000	BER-NSP	\$200,001
	2009	Trade Training Centre - Hospitality Commercial Kitchen	\$0	\$376,054	TTC	\$376,054
Mayfield - St Columban's Primary School	2009	Refurbishment of School Facilities - External & Internal	\$0	\$125,000	BER-NSP	\$125,000
	2009	Refurbishment of Administration & Construction of Library	\$580	\$1,500,000	BER-P21	\$1,500,580
Mayfield - St Dominic's Centre For Hearing Impaired Children	2009	Refurbishment of Library, School Facilities External & Internal, Procure Specialised ICT Infrastructure Support	\$0	\$50,000	BER-P21	\$50,000
	2012	Accessibility & Special Needs Upgrade	\$55,000	\$280,000	BGAS	\$335,000
Merewether Beach- Holy Family Primary School	2009	Refurbishment of School Facilities - External & Internal	\$0	\$125,000	BER-NSP	\$125,000
	2009	Construction of Library, Administration & Classrooms, Refurbishment of Multi-Purpose Hall & Classrooms	\$0	\$3,248,811	BER-P21	\$3,248,811
Merewether – St Joseph's Primary School	2006	Refurbishment of Administration, Staff & Library	\$300,511	\$0	Special	\$300,511
	2009	Refurbishment of School Facilities - External & Internal	\$0	\$150,000	BER-NSP	\$150,000
	2009	Refurbishment of Classrooms, Multi-Purpose Hall & Associated Works	\$0	\$1,796,833	BER-P21	\$1,796,833

Merriwa – St Joseph's Primary School	2006	Refurbishment & Extension of Administration, Staff & Library	\$325,000	\$440,672	GNE	\$765,672
	2009	Refurbishment of School Facilities & COLA - External	\$1	\$50,000	BER-NSP	\$50,001
	2009	Construction of Covered Outdoor Learning Area & Refurbishment of Student Amenities	\$0	\$250,000	BER-P21	\$250,000
Morisset – St John Vianney Primary School	2008	Refurbishment Administration, Staff & Library	\$385,316	\$0	Special	\$385,316
	2009	Refurbishment of School Facilities - External & Internal & Classroom Joinery Works	\$2	\$75,000	BER-NSP	\$75,002
	2009	Construction of Library, Multi-Purpose Hall & Associated Works & Refurbishment of Classrooms	\$0	\$1,800,050	BER-P21	\$1,800,050
Muswellbrook- St James' Primary School	2009	Construction of Security Fence, Resurface Driveway & Refurbishment of School Facilities - External	\$0	\$149,956	BER-NSP	\$149,956
	2009	Construction of Multi-Purpose Hall & Refurbishment of Library	\$151,962	\$2,503,167	BER-P21	\$2,655,129
Nelson Bay- St Michael's Primary School	2009	Refurbishment of School Facilities - External & Internal & COLA	\$1	\$125,000	BER-NSP	\$125,001
	2009	Construction of Multi-Purpose Hall & Classrooms	\$62,522	\$3,000,000	BER-P21	\$3,062,522
New Lambton - St Therese's Primary School	2009	Refurbishment of School Facilities - Internal & Construction of COLA	\$1	\$200,000	BER-NSP	\$200,001
	2009	Construction of Classrooms & Multi-Purpose Hall	\$931	\$4,500,000	BER-P21	\$4,500,931
Raymond Terrace – St Brigid's Primary School	2007	Construction of Classrooms, Staff & Refurbishment of Library	\$695,318	\$841,376	ISOP	\$1,536,694
	2009	Refurbishment of School Facilities - External & Internal & Construction of COLA	\$2	\$200,000	BER-NSP	\$200,002
	2009	Construction of Multi-Purpose Hall & Refurbishment of Classrooms	\$0	\$2,913,793	BER-P21	\$2,913,793
Rutherford – St Paul's Primary School	2004	Construction & Refurbishment of Classrooms, Administration, Staff & Library	\$743,851	\$926,444	ISOP	\$1,670,295
	2009	Construct COLA, Refurbishment of School Facilities, Procure ICT Equipment & Infrastructure	\$0	\$149,929	BER-NSP	\$149,929
	2009	Construction of Classrooms & Library & Associated Works	\$0	\$1,963,708	BER-P21	\$1,963,708
Scone – St Mary's Primary School	1998	Construction of Classrooms & Refurbishment - new Library, Offices & Staff Amenities	\$267,257	\$572,620	GNE	\$839,877
	2009	Refurbishment of School Facilities - External & Internal & Construction of COLA	\$2	\$125,000	BER-NSP	\$125,002
	2009	Construction of Multi-Purpose Hall & Classrooms & Associated Works	\$0	\$2,000,127	BER-P21	\$2,000,127
Shortland – Our Lady of Victories Primary School	2004	Construction & Refurbishment of Classrooms, Administration, Staff, Library, Toilets & Canteen	\$666,988	\$740,912	GNE	\$1,407,900
	2009	Refurbishment of School Facilities - External & Internal & Procure ICT Equipment & Infrastructure	\$0	\$75,000	BER-NSP	\$75,000
	2009	Construction of Multi-Purpose Hall & Refurbishment of Classrooms	\$4,884	\$1,050,000	BER-P21	\$1,054,884
Singleton - St Catherine's Catholic College	2006	All New School Buildings	\$1,768,027	\$3,202,744	GNE	\$4,970,771
	2007	Construction & Refurbishment of Classrooms	\$392,764	\$916,380	GNE	\$1,309,144
	2007	Refurbishment of Classrooms & Administration & Upgrade of Electrical Reticulation	\$2	\$200,000	BER-NSP	\$200,002
	2009	Construction & Refurbishment of Classrooms	\$400,000	\$3,535,372	BER-P21	\$3,935,372
	2009	Trade Training Centre - Purchase of Farm for Agricultural Studies	\$52,915	\$1,516,585	TTC	\$1,569,500

Stockton – St Peter's Primary School	2004	Construction of Classrooms, Administration, Staff & Library	\$347,314	\$354,715	ISOP	\$702,029
	2009	Refurbishment of School Facilities - External & Internal	\$1	\$75,000	BER-NSP	\$75,001
	2009	Refurbishment of Multi-Purpose Hall & Construction of Lift	\$0	\$498,067	BER-P21	\$498,067
Swansea - St Patrick's Primary School	2005	Construction of Administration, Staff & Library & Refurbishment of COLA	\$1,607,133	\$618,983	GNE	\$2,226,116
	2009	Refurbishment of School Facilities - External & Construction of COLA	\$2	\$75,000	BER-NSP	\$75,002
	2009	Construction of Multi-Purpose Hall	\$0	\$850,000	BER-P21	\$850,000
Taree – St Clare's High School	2005	Construction of Classrooms & Canteen Refurbishment	\$620,567	\$0	Special	\$620,567
	2007	Construction of Multi-Purpose Hall	\$1,070,394	\$0	Special	\$1,070,394
	2009	Refurbishment of School Facilities - External & Internal & Construction of COLA	\$3	\$200,000	BER-NSP	\$200,003
	2009	Refurbishment of Science Laboratories	\$0	\$839,195	BER-SLC	\$839,195
	2009	Trade Training Centre - Hospitality & Construction	\$75,127	\$1,363,635	TTC	\$1,438,762
	2010	Refurbishment of TAS & Art Classrooms	\$485,653	\$714,347	GNE	\$1,200,000
Taree - St Joseph's Primary School	1995/ 1998	Construction of Primary School	\$1,024,661	\$2,289,607	GNE	\$3,314,268
	2009	Refurbishment of School Facilities - External & Internal & Construction of COLA	\$1	\$150,000	BER-NSP	\$150,001
	2009	Extension to Multi-Purpose Hall & Classrooms, Refurbishment of Administration & Amenities & External Works	\$0	\$1,696,465	BER-P21	\$1,696,465
Tarro - Our Lady of Lourdes Primary School	2005	Construction & Refurbishment of Classrooms, Administration, Staff & Library	\$921,455	\$966,099	ISOP	\$1,887,554
	2009	Refurbishment of School Facilities - External & Internal, Construction of COLA	\$2	\$124,962	BER-NSP	\$124,964
	2009	Refurbishment and Construction of Multi-Purpose Hall Space, Construction of Student Amenities	\$0	\$848,060	BER-P21	\$848,060
Wallsend – St Patrick's Primary School	2005	Construction Classrooms, Administration, Staff, Library & Stores	\$995,072	\$1,059,403	GNE	\$2,054,475
	2009	Refurbishment of School Facilities - External & Internal, Construction of COLA	\$730	\$127,272	BER-NSP	\$128,002
	2009	Refurbishment of Multi-Purpose Hall & Classrooms	\$16,776	\$1,500,000	BER-P21	\$1,516,776
Waratah – Corpus Christi Primary School	2000	Construction of Classrooms, Library, Canteen, Disable Facilities & Refurbishment of other Classrooms	\$553,120	\$298,150	GNE	\$851,270
	2009	Refurbishment of School Facilities - External & Internal	\$1	\$125,000	BER-NSP	\$125,001
	2009	Refurbishment of Library & Multi-Purpose Hall	\$0	\$1,467,191	BER-P21	\$1,467,191

Warners Bay - St Mary's Primary School	2005	Construction Classrooms, Administration, Staff, Library	\$1,231,267	\$1,440,208	ISOP	\$2,671,475
	2007	Construction Classrooms, Administration, Staff Facilities	\$510,084	\$917,463	ISOP	\$1,427,547
	2009	Construct COLA & Security Fence, Refurbishment of School Facilities - External	\$4	\$200,000	BER-NSP	\$200,004
	2009	Refurbishment of Classrooms & Construction of COLA & Associated Works	\$0	\$500,000	BER-P21	\$500,000
Windale - St Pius X Primary School	2009	Refurbishment of School Facilities - External & Internal	\$0	\$50,000	BER-NSP	\$50,000
	2009	Construction of Library & Multi-Purpose Hall	\$68,455	\$800,000	BER-P21	\$868,455
Wingham - St Joseph's Primary School	2001	Construction & Refurbishment of School Facilities	\$111,461	\$260,078	GNE	\$371,539
	2004	Refurbishment of Site Landscaping & School Facilities - External & Internal	\$0	\$75,000	BER-NSP	\$75,000
	2009	Construction of Library & Multi-Purpose Hall	\$0	\$850,000	BER-P21	\$850,000
			TOTAL LOCAL CONTRIBUTIONS	TOTAL GOVERNMENT GRANTS		TOTAL PROJECT COST
SUB TOTALS Includes Chisholm			\$60,596,620	\$157,540,172		\$218,136,792



841 Hunter St Newcastle West NSW 2302
PO Box 714 Newcastle NSW 2300
Ph: 4979 1200 | Fax: 4979 1209
www.mn.catholic.edu.au